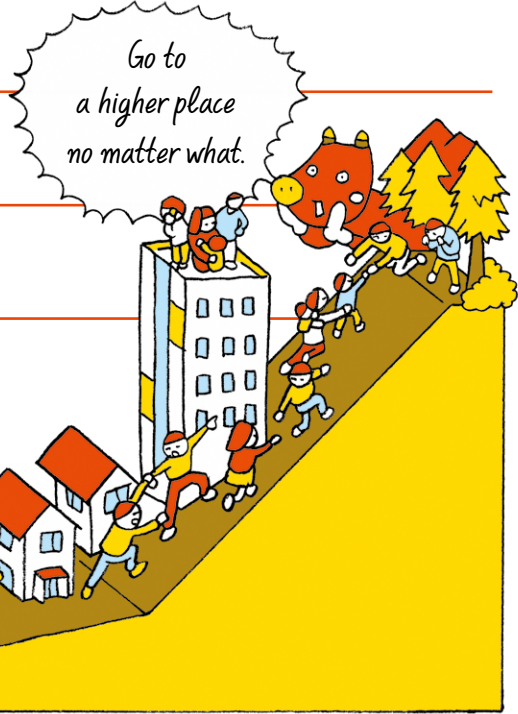




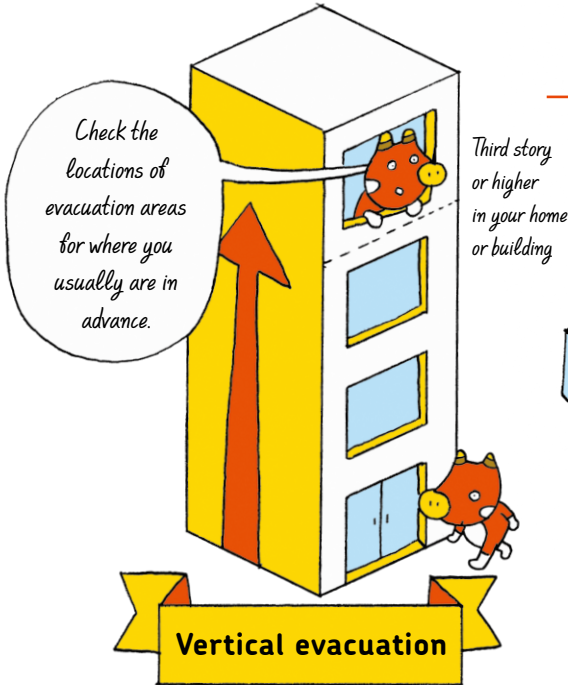
When a Tsunami Comes



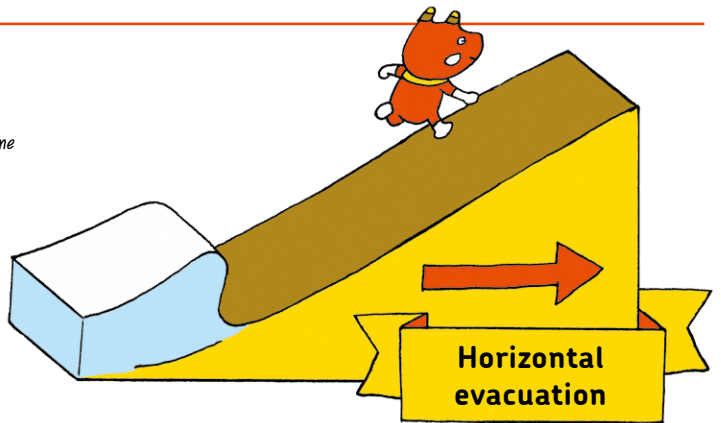
Running Away from a Tsunami

A tsunami can hit your place less than 5 minutes after an earthquake. When you feel a strong quake near the sea, run up to a higher place on the landside. Tsunamis also run up the river, so run away from rivers, too.

Evacuate to a higher place!



When you cannot choose horizontal evacuation or going out is dangerous, move to a higher place.



When there is impending danger at your present location, move to a different safer location.



A tsunami with an inundation height (height from the ground to the water surface) of nearly 10m hit the coast from Sendai city to Soma city in Fukushima prefecture, at the time of the Great East Japan Earthquake.