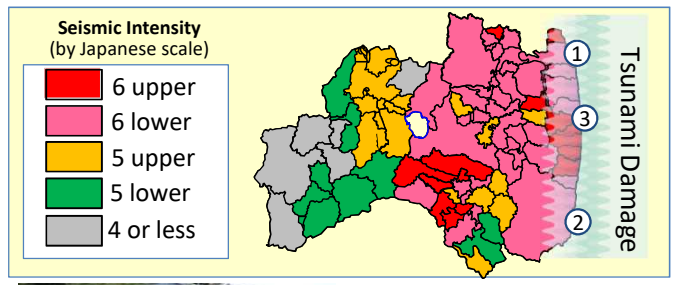


Triple Disaster Earthquake, tsunami and nuclear accident on March 11, 2011

The Great East Japan Earthquake occurred on March 11, 2011 at 14:46. Centered off the Sanriku coast in North Eastern Japan, its magnitude was a record high of M9.0, measuring a 7 on the JMA seismic intensity scale. Heavy shaking resulted in a large tsunami that struck a wide area along the coast.

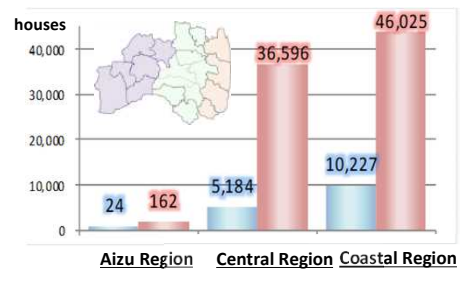


Disaster status after the earthquake and tsunami [as of 5 Jul., 2019]

Fatality : 4,105 people
(This number includes 2,275 disaster-related deaths)
Missing : 1 person

[Housing Damage by region]

Totally destroyed	15,435
Half destroyed	82,783

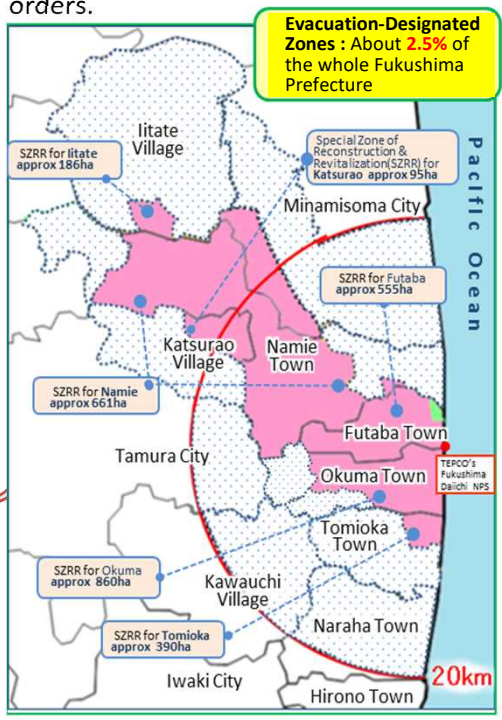
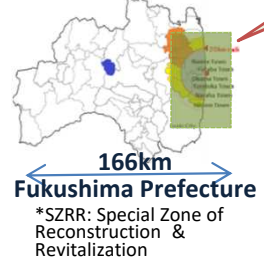


Evacuation Designated Zones

The areas under evacuation orders have changed such as with the lifting of the orders.

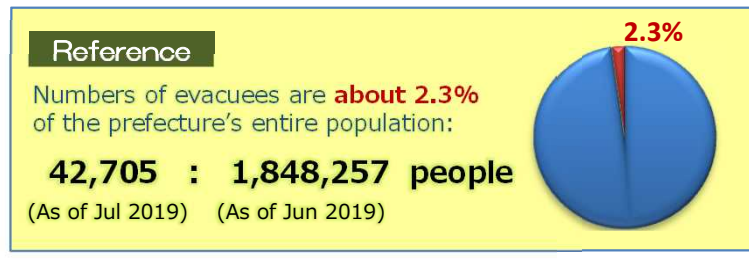
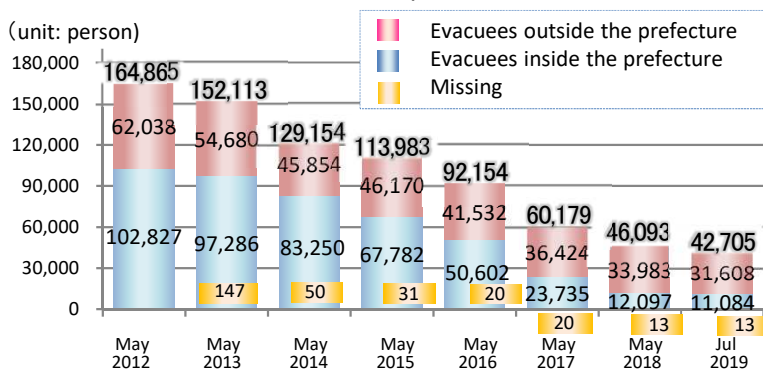
- Difficult-to-return zone
- Restricted residence zone
- Evacuation order cancellation preparation zone
- Areas where evacuation orders have been lifted.

Reconstruction projects in the difficult-to-return zone have started since 2017. (See SZRR* on the map)



Transition of evacuees

Transition of evacuees : Earthquake, Tsunami, NPS accident



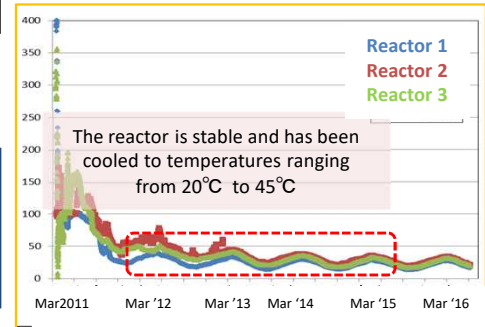
Current situation at TEPCO Fukushima Daiichi Nuclear Power Station

(As of December 2016, TEPCO's data)



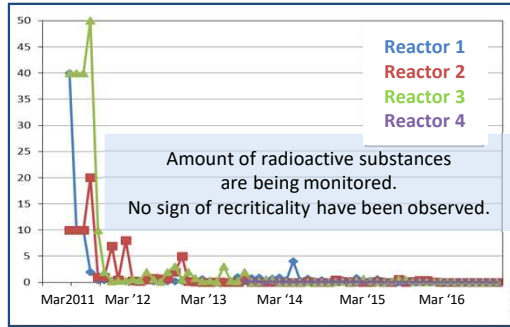
Reactor temperature

Temperature inside containment vessel air conditioners(°C)



Amount of radioactive substances

Amount of radio cesium per hour dispersed from the nuclear reactor buildings (1 mil. Bq)

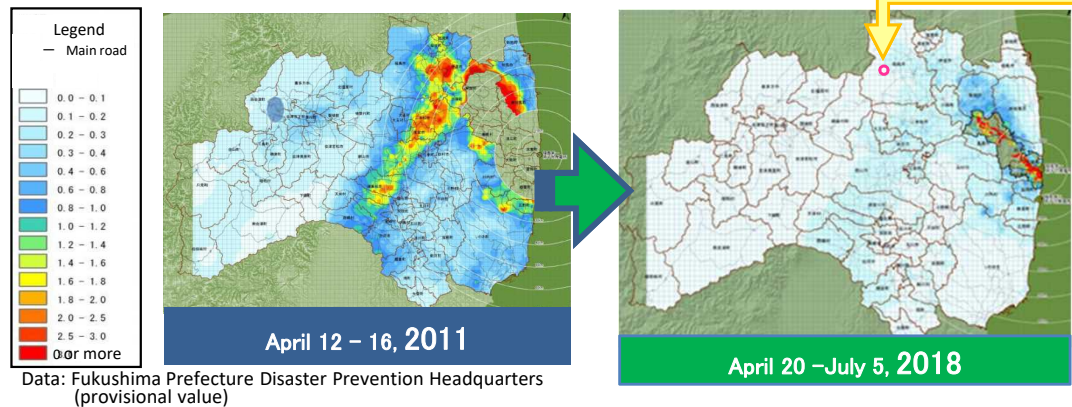


Revitalization in Fukushima

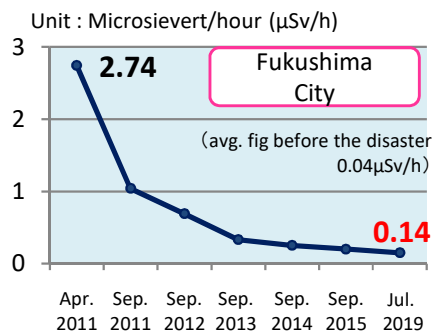
Air radiation levels in the prefecture have significantly decreased compared to April, 2011.
Decontamination of prefectural land has been completed in all areas except for the Difficult-to-return zone.

Transition of air radiation dose in Fukushima Prefecture

◆ Radiation dose level map covering the whole area of the prefecture based on the monitoring mesh survey of environmental radiation by Fukushima Prefecture.



◆ Transition of measurements(1)

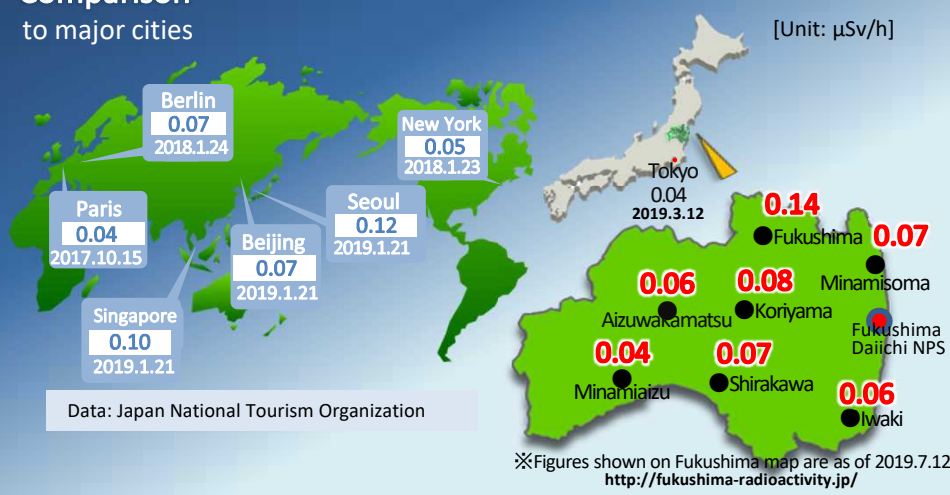


◆ Transition of measurements(2)

[Unit: μSv/h]

	Fukushima City	Aizuwakamatsu City	Iwaki City
Pre - disaster	0.04	0.04-0.05	0.05-0.06
Apr. 2011	2.74	0.24	0.66
Sep. 2011	1.04	0.13	0.18
Mar. 2012	0.63	0.10	0.17
Sep. 2012	0.69	0.10	0.10
Mar. 2013	0.46	0.07	0.09
Sep. 2013	0.33	0.07	0.09
Jul. 2019	0.14	0.06	0.06

Comparison to major cities



Fukushima Prefectural Centre for Environmental Creation

We have to quickly restore environment in Fukushima to create environment where citizens can live with peace of mind over the future. For that, we are conducting detailed environmental monitoring, research and information release as well as taking measures to help children learn about environment and radiation at the Information and Communication building, "Commutan Fukushima."

Fukushima Prefectural Centre for Environmental Creation Main Facilities (Miharu Town)

Environmental monitoring, education, training, exchanges

Research building
Main building
Information & Communication building
Commutan Fukushima

Inside the I & C building
Commutan Fukushima

Spherical Structure Theater

Environmental radiation Centre (Minamisoma City)
Environmental monitoring around the NPS
Open in Nov 2015

Wildlife Symbiosis Centre (Otama Village)
Monitoring of wildlife, environment learning, dissemination, awareness-raising activities
Open in Apr 2016

Inawashiro Aquatic Environment Centre (Inawashiro Town)
Open in Apr 2016
Research of Lake Inawashiro and other lakes and marshes. Environment learning, Dissemination, awareness-raising activities

IAEA cooperation

Fukushima Prefecture currently proceeding projects in cooperation with IAEA*

Projects include the review of decontamination technology used for rivers and lakes, and studying the movement of radioactive materials contained in wild animals.

*IAEA : International Atomic Energy Agency

IAEA proposed project

- Decontamination in Fukushima
- Support for utilization of radiation monitoring data for drawing of easily understandable map ...

Our proposed projects

- Project to review the decontamination technology for rivers, lakes and ponds
- Behavioral survey of radionuclide in wild lives ...

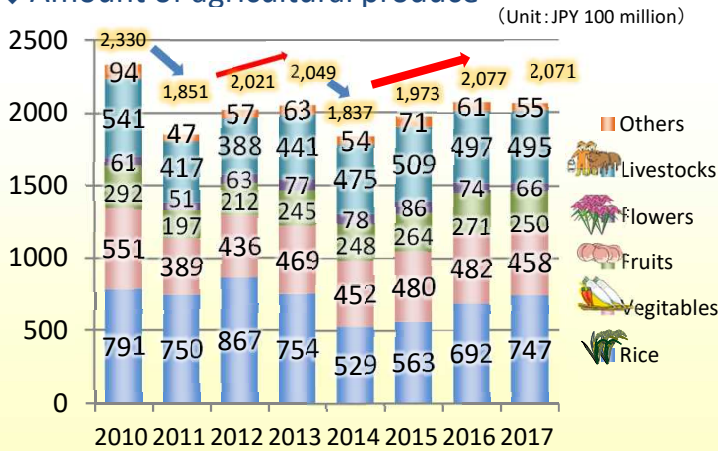
On-site inspection by IAEA experts



Situation of the agricultural, forestry, and fishery Industries

Production values for the agricultural, forestry, and fishing industries have decreased since the disaster, March 2011. The prefecture is putting the upmost effort into a variety of activities to revitalize the agricultural, forestry, and fishery industries, which will in turn contribute to helping rebuild the livelihoods of disaster-affected citizens. Activities include PR campaigns introducing qualities of Fukushima products along with the systems in place to ensure food security and safety.

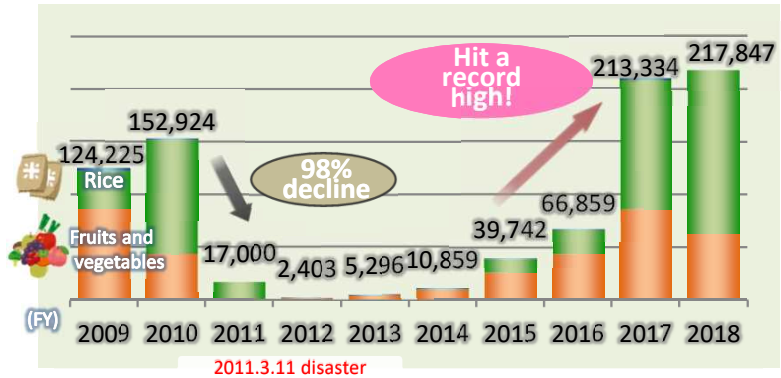
◆ Amount of agricultural produce



※In terms of rice, crop acreage and yield increased after 2012, but in 2014 and 2015, the nationwide rice price sharply dropped and the rice output also significantly dropped in the prefecture, as well.

◆ Changes in exports of agricultural and fisheries products from Fukushima

Immediately after the disaster export volumes dropped by about 90%. In spite of that, our efforts for safety and confidence recovery within the prefecture and recognition of product quality has lead to a steady increase in export volumes to South East Asia.



Monitoring of Fukushima's agricultural, forestry and fishery products

Fukushima's primary products undergo monitoring inspection before being shipped. Any product that is found to exceed the safety standard is banned from being shipped based on the product type and produced area. **Products being distributed are confirmed to be safe.**

◆ Test results on all rice in all rice bags

(2018.8.21-2019.5.31)

Brown rice Year 2018 production	Total No. of samples	No. of samples exceeding safety standard limits	Proportion of samples exceeding safety standard limits
	Approx. 9.23 million	0	0.00%

Test results are released to the public.

<https://fukumegu.org/ok/contents/>



◆ Inspection results

(2019.4.1-2019.5.31)

Classification	Total No. of samples	No. of samples exceeding standard limits	Proportion of samples exceeding standard limits
Vegetables & Fruits	386	0	0.00%
Livestock products	667	0	0.00%
Cultivated edible plants & mushrooms	188	0	0.00%
Marine fishery products	859	0	0.00%
Fresh water farmed fish	14	0	0.00%
Wild edible plants & mushrooms	416	0	0.00%
Fresh water fishery products	232	2	0.86%

Inspection: Fukushima prefecture is carrying out these inspections based on national guidelines.

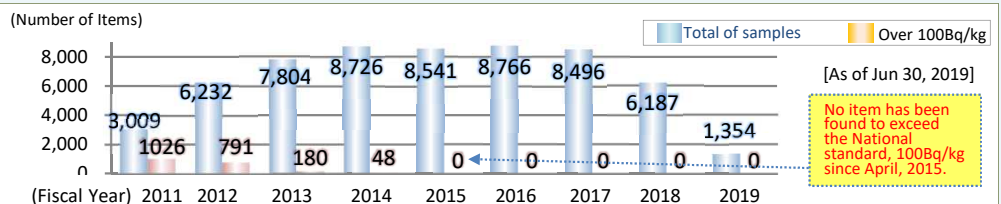
Category	Reference Safety standard limits for radioactive cesium (Unit: Bq/kg)	
	Japan	EU
General foods	100	1,250
Milk	50	1,000
Infant foods	50	400
Drinking water	10	1,000

Data: Consumer Affairs Agency (Govt. of Japan)

Marine fish and shellfish monitoring inspection



State of voluntary inspections by the fisheries cooperative association.

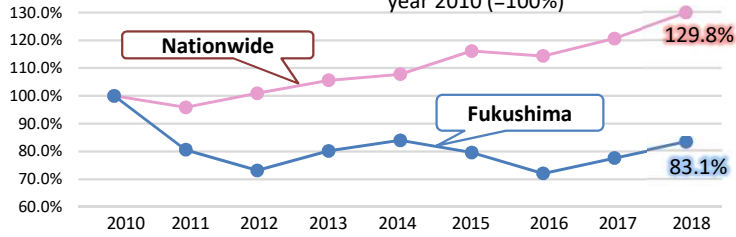


Tourism to date

We hope that many people will visit Fukushima prefecture and see our situation steadily moving forward toward revitalization.

◆ Tourists' accommodation

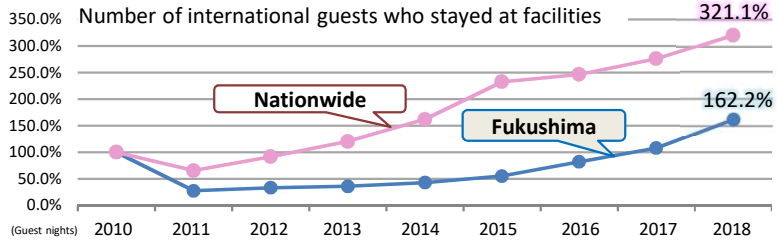
Comparison of guest nights vs year 2010 (=100%)



	2010	2011	2012	2013	2014	2015	2016	2017	2018
Nationwide	216,384,110	207,382,740	218,313,430	228,502,930	233,210,970	251,308,060	247,403,020	280,784,880	
Fukushima	6,359,610	5,124,410	4,651,110	5,098,920	5,341,020	5,061,810	4,581,850	5,284,020	

[Data] Japan Tourism Agency The Survey of Tourist Accommodation Tourism Promotion Bureau, Fukushima Prefectural Government

◆ Total number of international guests



	2010	2011	2012	2013	2014	2015	2016	2017	2018
全国	26,023,000	17,015,780	23,822,510	31,242,220	42,072,820	60,509,240	64,066,730	72,933,660	83,566,460
福島	87,170	23,990	28,840	31,300	37,150	48,090	71,270	96,290	141,350

Tokyo 2020 Olympic Games Torch Relay to start from Fukushima Prefecture / Games to commence with a softball game in the prefecture

It has been finalized that the Tokyo Olympic Torch Relay will be kicked off from Fukushima Prefecture on March 26, 2020. Additionally, the schedule for the opening games of softball matches was released. They will take place at the Fukushima Azuma Baseball Stadium on July 22, two days before the opening ceremony of the Olympic Games. Ahead of all other matches it has also been decided that opening games of baseball matches will take place in the prefecture as well.

The Tokyo Olympic and Paralympic Games will be held as the Reconstruction Olympic Games. The Prefectural Government will take that opportunity to show the appreciation for support from around Japan and the world and how Fukushima is progressing towards revitalization in the wake of the disaster.

Fukushima Airport - Operation of regular charter flights to and from Taiwan has begun.

A charter flight from Taiwan has landed at Fukushima Airport. A welcoming ceremony for visitors from Taiwan.

Taiwan's Far Eastern Air Transport airline began operating regular charter flights in April, 2019. 2 round-trip flights a week are operated departing from Fukushima and Taipei each on Thursdays and arriving at each airport on Sundays.

The regular charter flights are expected to expand mutual exchange between Fukushima and Taiwan. The prefectural government has made a commitment to promote further operations of international chartered flights.

Fukushima Innovation Coast Framework

Fukushima Innovation Coast Framework aims to create a new industrial base in the coastal region in order to revitalize industries affected by the Great East Japan Earthquake, Tsunami and nuclear disaster.

Construction of hubs for research and development

Fukushima Robot Test Field

This is an unprecedented research and development hub where R&D, demonstrative tests, performance assessments and operational training for use of robot and drones for land, sea and air will take place.

Construction of an Aerial-drone Area; Infrastructure inspection and disaster response area; On-water and under water robot area; and R&D infrastructure area is planned at a site extending 1,000 m east-west and 500 m north-south in Minamisoma City's Revitalization Industrial Park. There are also plans to construct a runway for long distance flight tests in Namie town's Tanashio Industrial Park.

All facilities are scheduled to open in FY 2019

Hub facilities for decommissioning research

- International Decommissioning Joint Research Center, International Joint Research Building** (Tomiooka Town) - Opened in April, 2017
- Okuma Analysis and Research Center (Laboratory for analysis and research of radioactive substances)** (Okuma Town) - Partially opened in March 2018
- Naraha Remote Technology Development Centre (mock-up Centre)** (Naraha Town) - Opened in April, 2016

Education & promotion of industrial cluster

Education and fostering of human resources so that the next generation will be able to bear the burdens of the future and promote the industrial cluster.

Business exchange sessions

Accumulation of knowledge related to revitalization

Osaka University x Iitate Village

Promotion of development of the environment

Operation of new local route bus

Shin Joban Kotsu Bus operation Co. started Iwaki-Tomioka lane in April 2017.

New Hospital

Futaba Medical Centre-affiliated hospital (Tomiooka Town)

Hub facility for archiving of the Great East Japan Earthquake, Tsunami & Nuclear Disaster

Construction of hub facility for the archiving of material related to the Great East Japan Earthquake, Tsunami and Nuclear Disaster

Archive center (Futaba Town) - Scheduled to open in FY2020

Enhancement of regional cooperation by various entities

Efforts through collaboration among Soft Bank, Innovation Coast Framework Promotion Organization and Fukushima Prefectural Government

Programming session

Fukushima Prefecture

- Capital : Fukushima City
- Population: 1,848,257 (Jun. 2019)
- Area: *13,783km² (*Evacuation designated zones: 339km²)

Fukushima Prefectural Government

Telephone : (+81) 24- 521-1111
E-mail : sougoukeikaku@pref.fukushima.lg.jp

Record 10 million views in one week!

Diamondroutejapan.com

Lonely Planet Discover Nikko & Aizu

Fukushima Revitalization Station

- Portal site of revitalization progress -

<http://www.pref.fukushima.lg.jp/site/portal-english/>