

～Fukushima Today～

Steps for Reconstruction and Revitalization in Fukushima Prefecture



— Index —

■ Coming into a decade since the disaster

1 Revitalization efforts and challenges

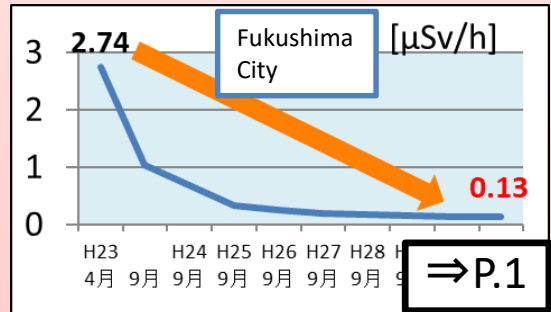
(1)	Decontamination	P1
(2)	Current status of the Evacuation-designated Zone	P2
(3)	Change in evacuee numbers	P2
(4)	Health of Fukushima residents	P3
(5)	Securing of housing and creating an environment for people to return	P4
(6)	Basic infrastructure	P5
(7)	Industry		
	① Agriculture	P6
	② Tourism	P7
	③ Business investment and employment creation	P8
	④ The Fukushima Innovation Coast Framework I	P9
	The Fukushima Innovation Coast Framework II	P10
(8)	Efforts towards decommissioning	P11
(9)	Impact of disasters, etc. on the revitalization efforts		
	① COVID-19	P12
	② Damage caused by Typhoon Hagibis	P13
2	Going forward	P14

Coming into a decade since the disaster

Revitalization in Fukushima has been making steady progress. The evacuation order was partially lifted for Futaba Town where all residents had been evacuated and there was the full opening of the Fukushima Robot Test Field as well. On the other hand, the path to revitalization is still long and difficult. Due to the unprecedented compound disaster, more than 36,000 people are still evacuated. In addition, other disasters such as Typhoon Hagibis and COVID-19 have caused an enormous impact amid our revitalization efforts.

Revitalization efforts that have shown great progress

○ Atmospheric radiation levels have significantly dropped



○ JR Futaba Station on the Joban Line reopened in Mar. 2020



○ Fukushima Pride Delivery Service
Total sales of the online store reached 2.6 billion yen in FY2019.



○ Fukushima Robot Test Field was fully opened

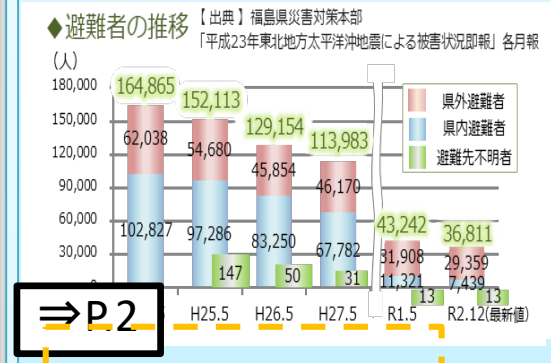


○ The Great East Japan Earthquake and Nuclear disaster Memorial Museum opened in Sep. 2019



Revitalization efforts still in progress

○ More than 36,000 people remain in a state of evacuation



○ ALPS-treated water



○ Measures taken against COVID-19 (Reception in a lodging facility for patients with mild symptoms)



○ Efforts towards decommissioning



○ Enormous damage caused by Typhoon Hagibis and heavy rains



○ Realisation of structures including the organisations, systems and financial resources which support the efforts of the Second Reconstruction and Revitalization Period through the enactment of the "Act Partially Amending the Act for Establishment of the Reconstruction Agency" and the decision made on the "Reconstruction Efforts from FY 2021".

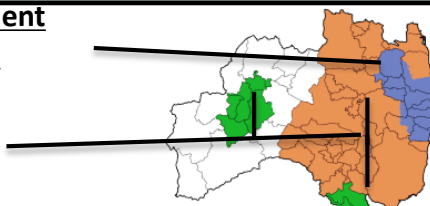
Revitalization is moving into the next phase in 2021. ⇒P.14

(1) Decontamination

Decontamination of prefectural land has been completed in all areas except for the Difficult-to-return Zone. Atmospheric radiation levels in the Prefecture have significantly dropped, and are the same as other major cities throughout the world.

Area the national government conducts decontamination (Blue)

Area each municipality conducts decontamination (Orange, Green)



Fukushima Prefectural Centre for Environmental Creation Main Facilities (Miharu Town)



Environmental monitoring, research information release education, training, exchanges

Environmental Radiation Monitoring Centre (Minamisoma City)



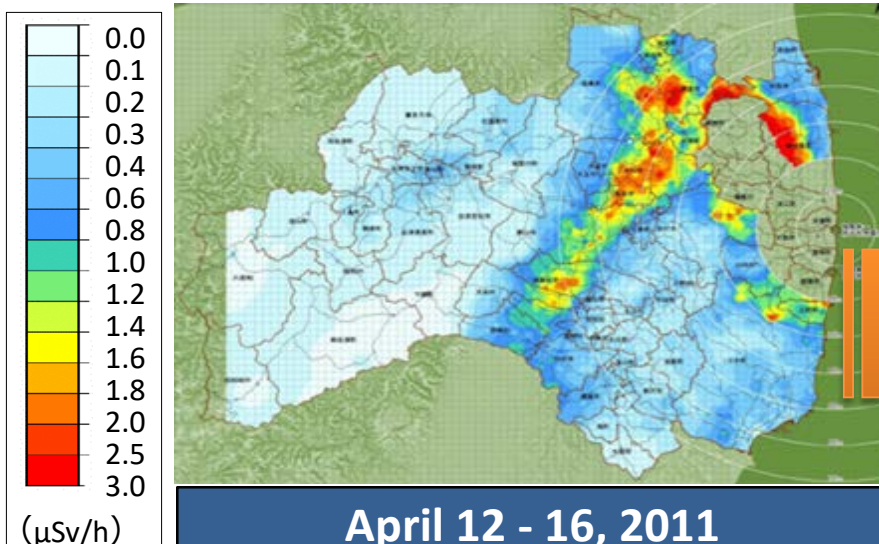
Environmental monitoring around the NPS

Municipality-led decontamination

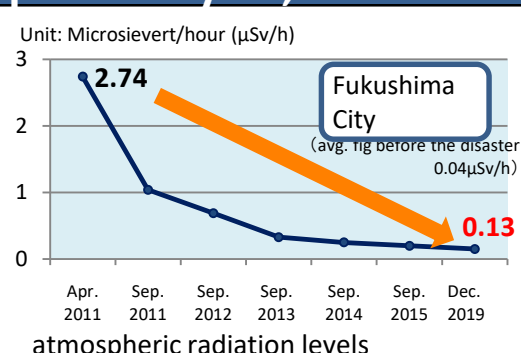
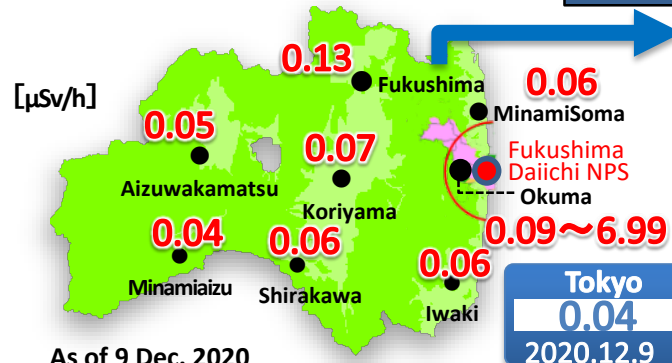
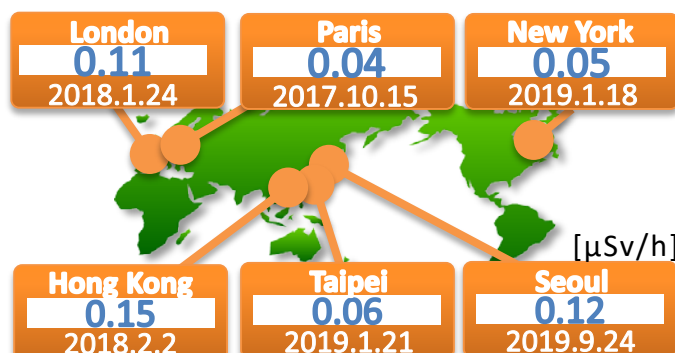
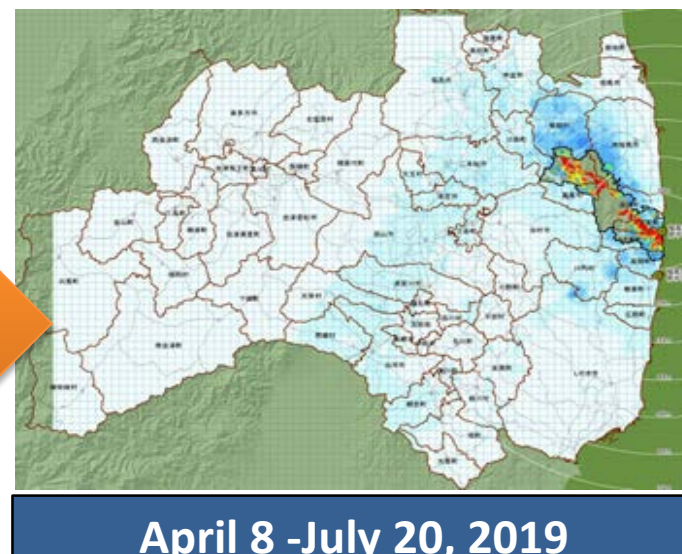


※Decontamination work carried out in accordance with the plan for decontamination.

○ Air radiation dose in Fukushima Prefecture



Substantial decrease



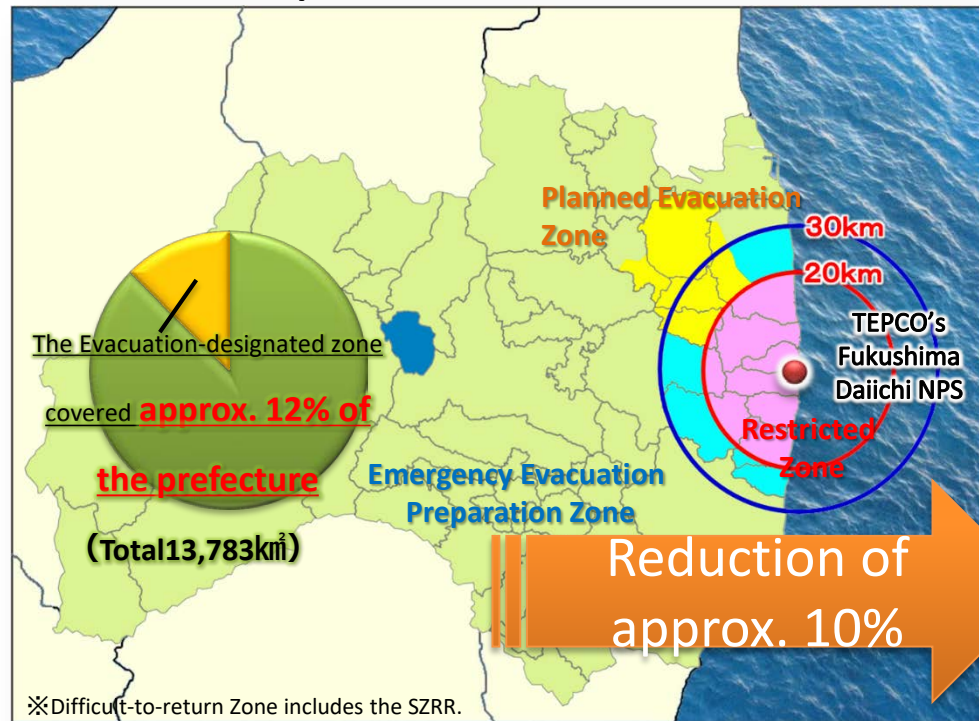
【Challenges and Responses】

- Restoration of land used for Temporary Storage Sites
- Safe and secure transportation of contaminated soil to the Interim Storage Facility.
 - Volume already transported: Around 9.38 million m³ out of the planned 14 million m³ (as of the end of Oct. 2020)
- Final disposal of contaminated soil outside of Fukushima Prefecture
- Decontamination of the Difficult-to-return Zone (except for Special Zones for Reconstruction and Revitalization)

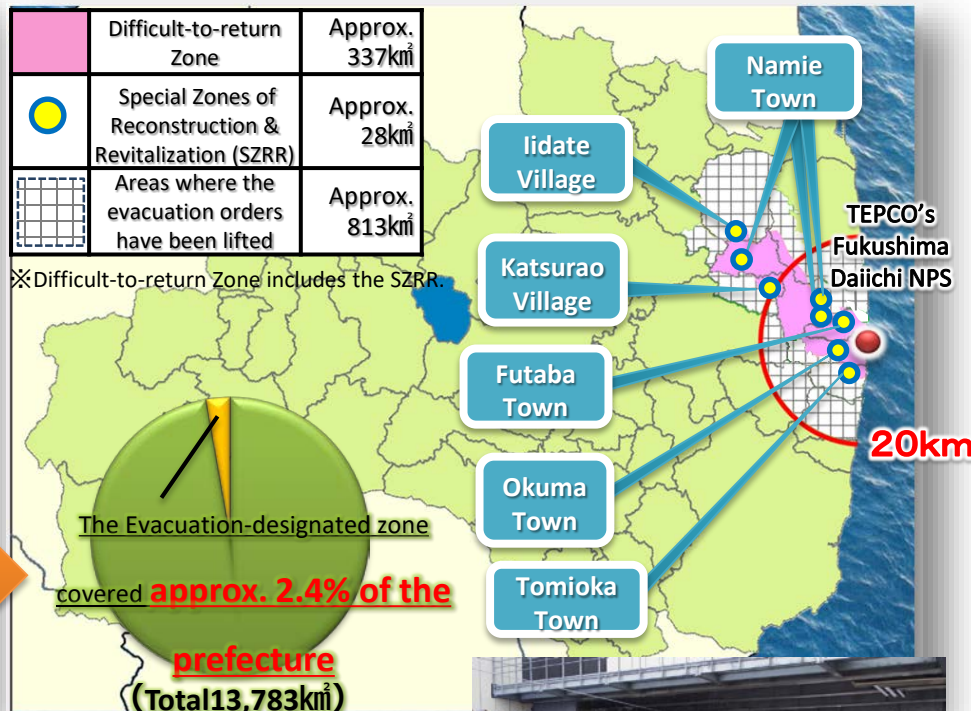
(2) Current status of the Evacuation-designated Zone

Progress is being made on the lifting of evacuation orders in accordance with the creation of an environment which people can return to. The proportion of the area of the prefecture under evacuation orders has reduced from approx. 12% to approx. 2.4%.

○ As of 23 Apr. 2011



○ As of 10 Mar. 2020 ~ Present



○ Lifting of evacuation orders in 2020

- 4 Mar. Futaba Town (around Futaba Station) Evacuation Order Cancellation Preparation Zone)
- 5 Mar. Okuma Town (around Ono Station)
- 10 Mar. Tomioka Town (around Yonomori Station)

The first lifting of evacuation orders in Futaba

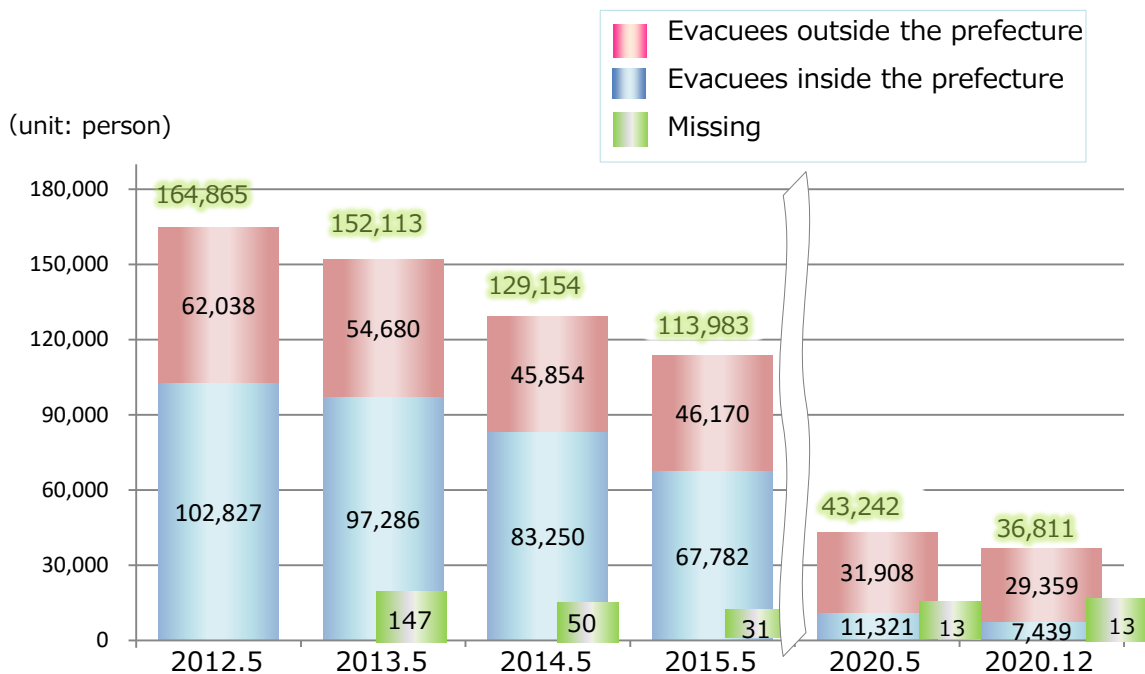
【Challenges and Responses】

The Special Zones for Reconstruction and Revitalization account for about 8.3% of the Difficult-to-return Zone

- The national government will consider a concrete policy to lift evacuation orders to the whole area of the Difficult-to-return Zone respecting the wishes of the local people.

(3) Change in evacuee numbers

(As of Dec. 2020)



Futaba Station reopened 14 Mar. 2020

○ Proportion of residents living in municipalities where evacuation orders have been lifted (As of Oct. 2020)

- 【Lifted 2014】
 - Tamura City (Miyakoji District) 83.8%
- 【Lifted 2015】
 - Naraha Town 59.4%
- 【Lifted 2016】
 - Kawauchi Village 80.8%
 - Minamisoma City (Odaka District) 55.2%
- 【Lifted 2017】
 - Kawamata Town (Yamakiya District) 47.0%

【Challenges and Responses】

- Maintaining a support system and consultation services for evacuees.
- Creation of an environment for people to return that includes shopping, healthcare and welfare, education, transportation, and wildlife damage control.

(4) Health of Fukushima residents

The Prefecture is aiming to become one of the healthiest prefectures in Japan by implementing the Fukushima Health Management Survey and Projects for a Long and Healthy Life

The Fukushima Health Management Survey is being implemented to understand the health of residents, in order to maintain and improve their health into the future.

◆ Basic Survey 【Radiation Dose Estimates】

External exposure doses were estimated for a 4-month period immediately after the nuclear accident to 11 July 2011, based on a self-administered questionnaire.

< Results of estimate on external exposure dose >

【All citizens surveyed】

Ratio of dose from 0 to 2mSv accounts for 93.8% of all.

◆ Detailed Survey 【Thyroid Ultrasound Examination】

It covers residents of Fukushima Prefecture aged 18 years and younger at the time of the disaster.

*Preliminary Baseline Screening: FY2011-FY2013

Full-scale Thyroid Screening: FY2014-

【Primary Examination】 Ultrasonography

【Confirmatory Examination】 Advanced ultrasonography, blood test, etc.



The Projects for a Long and Healthy Life will try to respond to various health issues caused by changing environments after the disaster.

- Encouraging healthy thinking among residents.
- Educating the next generation through child health promotion programs.
- Health promotion that starts from a healthy diet.
- Protection from second-hand smoke.
- Improving consultation rate of health check ups and screenings.

The easy to use and fun "Fukushima Healthy App" helps residents to acquire a healthier lifestyle

iPhone端末の場合



App Store
からダウンロード

OSバージョン
iOS 9.0 以上

機種
iPhone 5s 以降



Android端末の場合



Google Play
で手に入れよう

OSバージョン
Android 5.0 以上

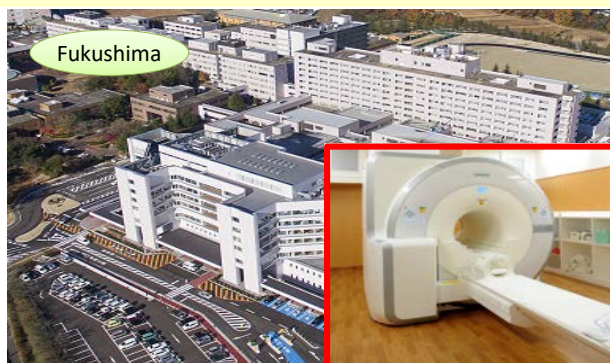
機種
Android 5.0以降を
初期OSとしている機種





Development of a hub for cutting-edge radiological research and medical care & Fostering of human resources in medical fields

Fukushima Global Medical Science Center



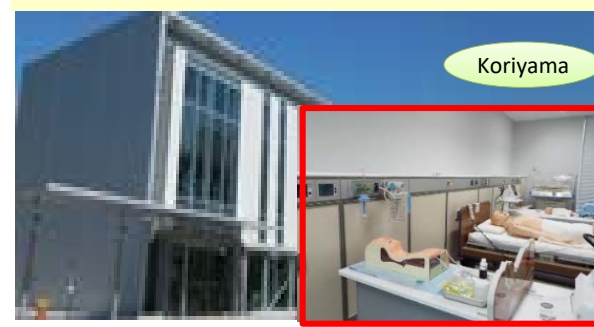
Providing cutting-edge medical care such as PET scans and MRI's

School of Health Sciences (tentative name) Fukushima Medical University



Training medical professionals responsible for local medical care.

Fukushima Medical Device Development Support Centre



Promotion of the domestic medical equipment industry and improving medical skills through training.

【Challenges and Responses】

- Secure nursing personnel and support the operation of caregiving facilities.
 - The number (or rate) of people with metabolic syndrome, child obesity and children's cavities is high, compared with the national average.
 - Extend people's healthy life expectancy by encouraging a healthy lifestyle.
- The number of people who died from lifestyle diseases: Fukushima ranked the eighth-worst prefecture in Japan. [717.7 per 100,000 people (as of Oct. 2017)]

Construction of revitalization public housing has been completed to provide for those affected by the disaster with places to settle down. Development is progressing for other facilities such as medical and caregiving services, as well as, shopping facilities necessary for people to move back.

◆ Revitalization Public Housing



Iwaki City : Iwasaki housing complex



Okuma Town : Disaster public housing

◆ Shopping facilities



Namie Town: Roadside-Station "Namie"



Naraha Town: KOKONARA Shopping Mall

◆ medical and caregiving services

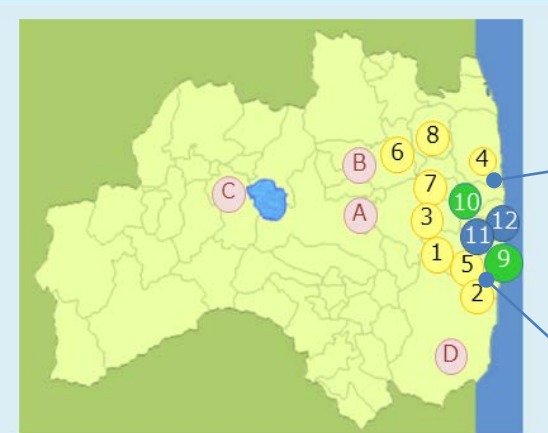


Futaba Town : Futaba Medical Center-affiliated Hospital



Multi-purpose medical helicopter

◆ Educational facilities



【1】 Locally reopened schools

1 Kawauchi Village 2012.4~	4 Odaka District Minamisoma City 2017.4~	6 Iitate Village 2018.4~
2 Hirono Town 2012.8~	5 Naraha Town 2017.4~	7 Katsurao Village 2018.4~
3 Miyakoji District Tamura City 2014.4~		8 Yamakiya District Kawamata Town

【2】 Schools moved to evacuation sites (Some schools have resumed in their hometowns)

9 Tomioka Town 2018.4~	↔ A Miharu Town
10 Namie Town 2018.4~	↔ B Nihonmatsu City

【3】 Schools moved to evacuation sites (Remain at the sites)

11 Okuma Town	→ C Aizuwakamatsu City
12 Futaba Town	→ D Iwaki City



Odaka Industrial Technology and Commerce High School

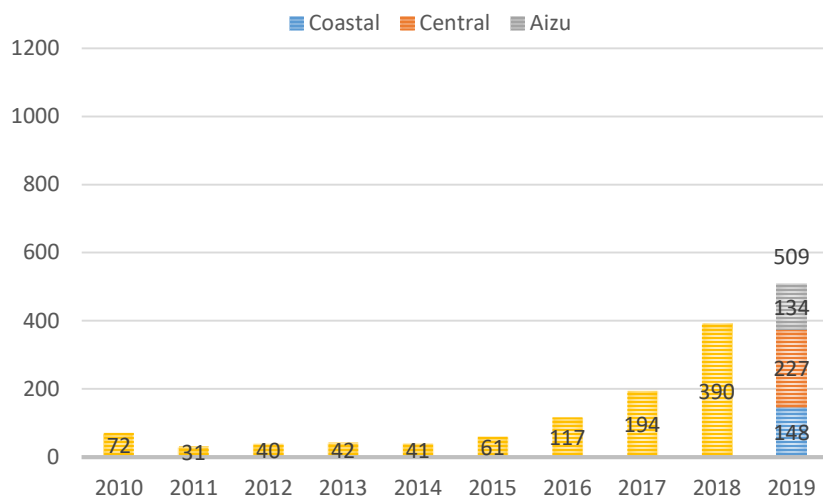


Futaba Future School Junior and Senior High school

◆ Efforts being taken in the creation of new opportunities to relocate to Fukushima.

Currently, the younger generation, those in their 20s, 30s and 40s, accounts for nearly 80% of those who have moved to Fukushima from outside the Prefecture.

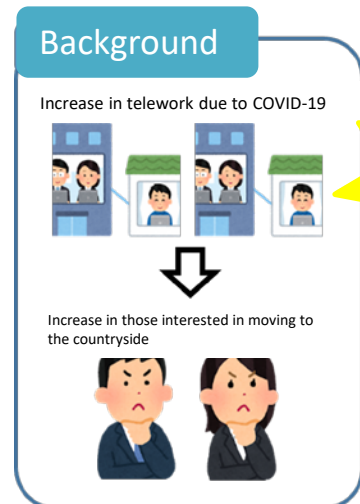
【The number of households settled or living dual habitation】 (limited to the number obtained by the Prefectural Government)



【Fukushima Telemwork Experience】



- Amid the COVID-19 pandemic, there has been a growing interest in moving to the countryside to do telemwork without having to change jobs.
- Promoting measures for relocation dealing with telemwork by seizing the opportunity to help more people move to Fukushima.



Seizing the opportunity to attract people to the Prefecture

① Fukushima's Telemwork and Lifestyle Experience Support Project

i Experience Fukushima- Full Course (long term)

【Period】1-3 months
【Subsidy rate】Covering three-quarters of the cost (up to 300,000 yen)

ii Experience Fukushima- Brief Course (short term)

【Period】Short (up to five nights and six days)
【Subsidy rate】Covering up to nine tenths of the cost (up to 10,000 yen per night)

② Subsidy for supporting the establishment of satellite offices

【Eligible companies】Companies outside the Prefecture planning to establish satellite offices
【Subsidy rate】Covering up to three-quarters of the cost
【Upper limit of subsidy】5 million yen (1 million yen only for the cost of facility equipment)

※ Also, a financial assistance system has been created to support individuals from across the country move to one of the 12 disaster affected municipalities. It is set to be implemented from FY2021.

【Challenges and Responses】

- Continuing to provide consultation regarding housing and rebuilding of livelihoods, as well as looking after residents, providing support for everyday life and, and community building
- Providing a comprehensive medical and caregiving system based on the needs of residents
- ➔ Resumption rate of medical institutions: 34% (as of Oct. 2020)
- Further promotion of distinctive and engaging education
- Encouraging people from outside the Prefecture to relocate and settle down as well as increasing the number of people visiting the Prefecture

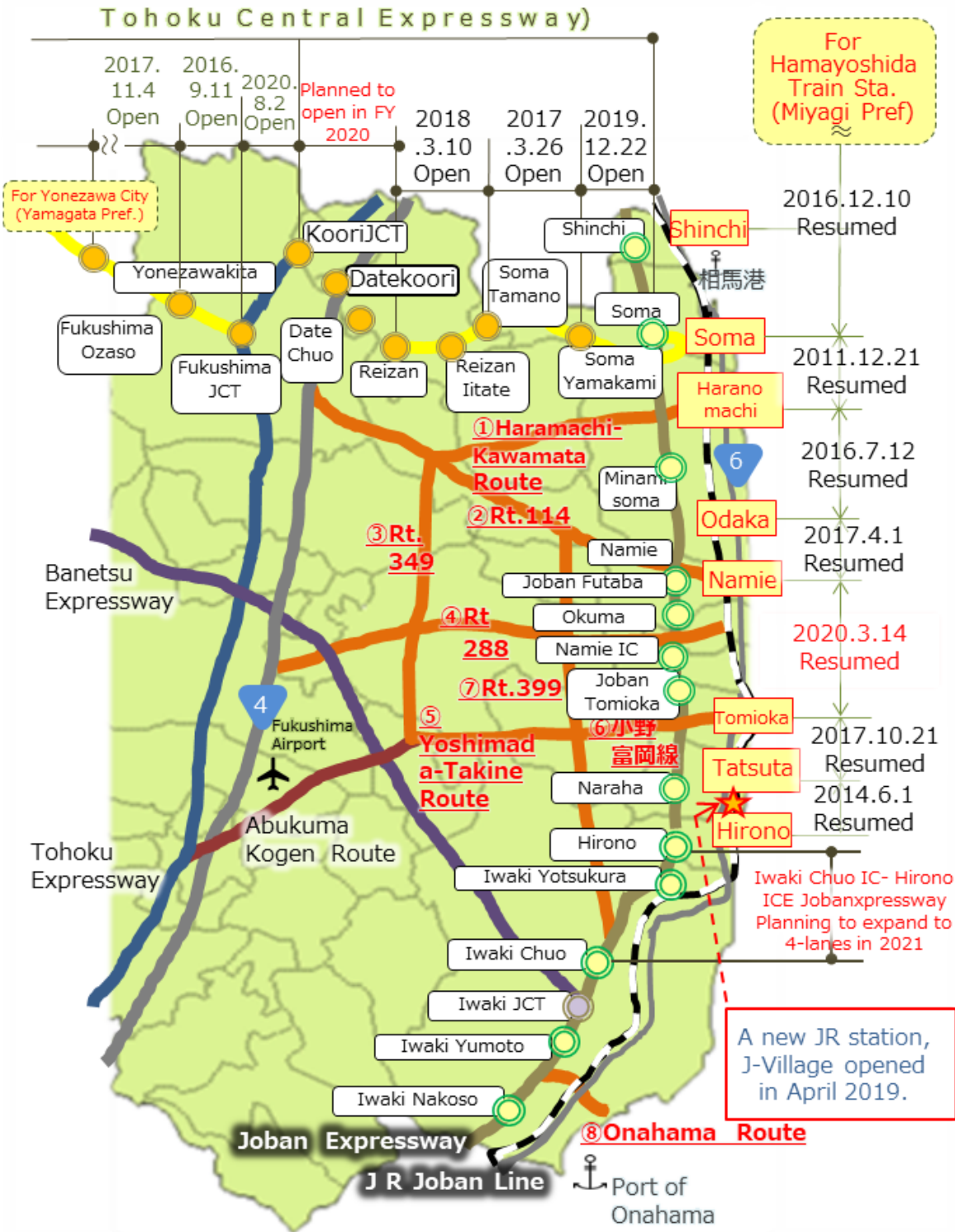
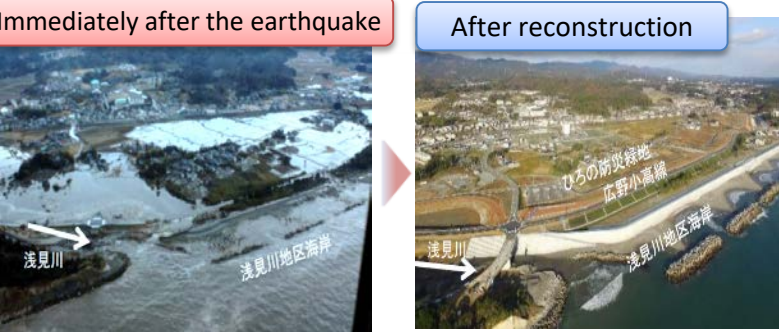
(6) Basic infrastructure

96% of reconstruction work has been completed. Development of transportation networks including roads has been progressing and train services along the entirety of the JR Joban Line have been resumed.

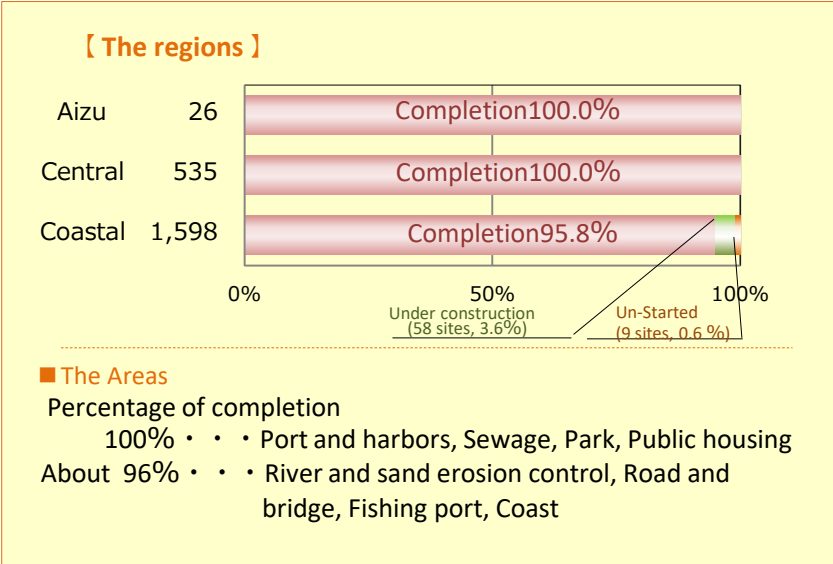
Site affected by the disaster: Iwaki City (Watanabe-machi)
Route 14
Damage: Collapsed slope due to a large landslide



Site affected by the disaster: Hirono Town, Asamigawa District coast
※ Multiple protections against Tsunami (Seawall, green and open space, disaster prevention forest, and road)



- ### 【Challenges and Responses】
- Impact on revitalization efforts caused by Typhoon Hagibis.
 - Reconstruction of public works facilities and coasts in the Difficult-to-return Zone
 - Development of the Fukushima Reconstruction and Revitalization road and strengthening of the road network which connects the east and west sides of the Prefecture.
 - Creating a sustainable local public transportation network.



Production values have recovered up to 90.7% of pre-disaster levels, and farming has resumed gradually in the affected areas.

Decontamination of farmland

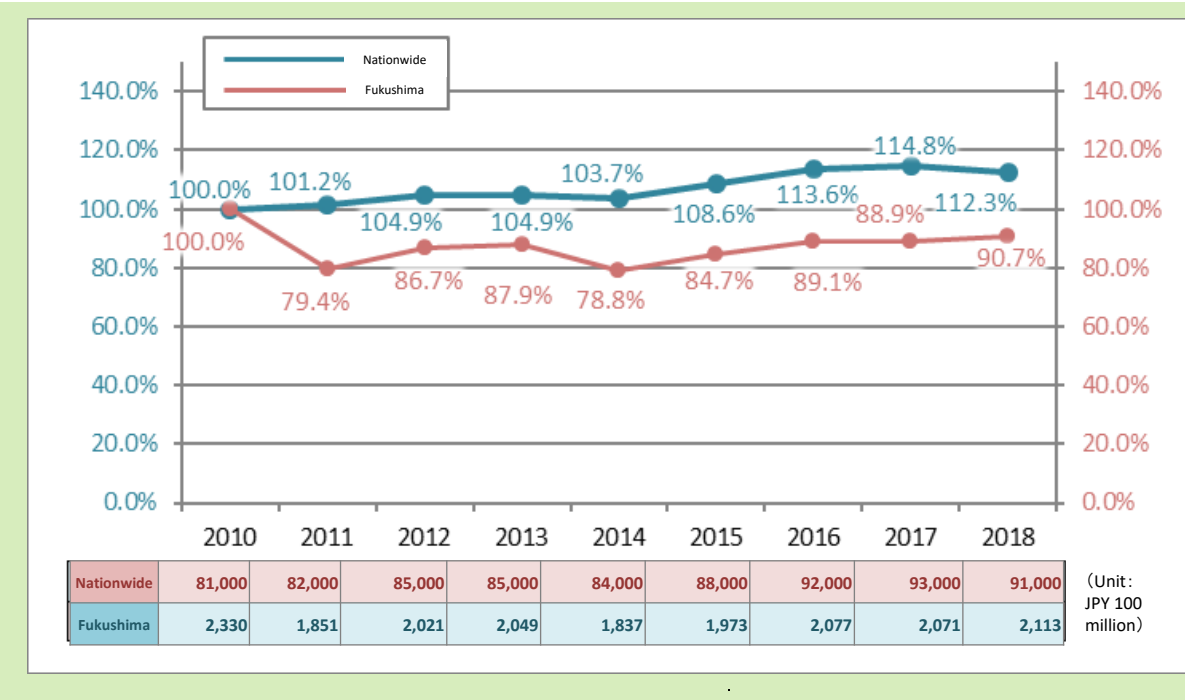
Reverse plowing
Reverse the surface soil with subsoil



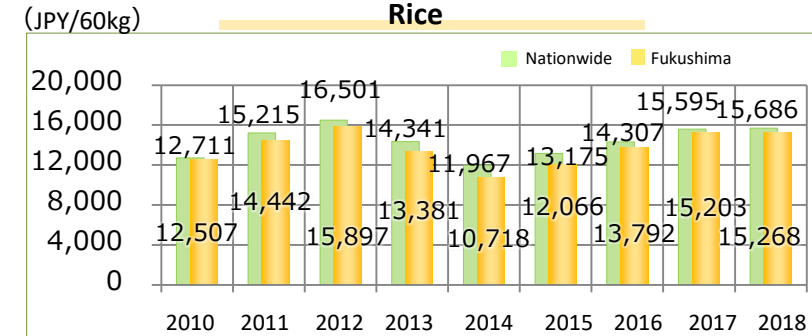
Cleaning of tree bark



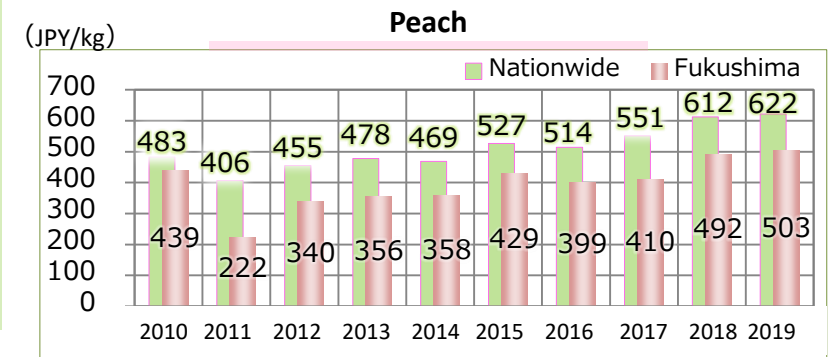
➤ Ratios of agricultural products compared to 2010 set as 100%.



➤ Transition of the price for most Fukushima agricultural products.



※*The figure for 2018 is provisional based on the data available as of the end of Aug. 2019.



Fukushima Pride Delivery Service
Total sales of the online store reached 2.6 billion yen in FY2019.
Increased about 400 million yen compared to the previous fiscal year.



Fukushima's original rice variety "Fuku Warai"



- Regarded as the top rice brand of the Prefecture, it will make a full debut from FY2021 with a limited volume of production due to farmers' commitment to taste and quality.
- Making "Fuku Warai" a driving force for improving the image of all the rice produced in Fukushima and increasing sales prices.

Farming has resumed in the affected areas



Smart agriculture initiatives



A rice-transplanter with a keeping straight function



A Power Assist Suit for agricultural work

Wildlife Damage



Wild boars captured in a cage trap

【Challenges and Responses】

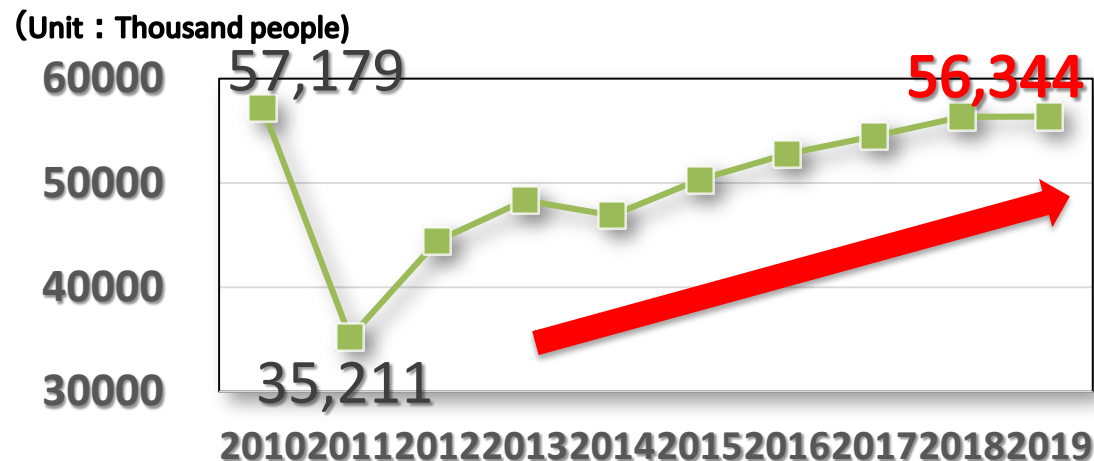
- Regaining the price of agricultural products to the national average (Promoting branding of Fukushima products).
- Wildlife damage control.
- Further accelerating the resumption of farming, developing and demonstrating advanced technology, securing new manpower.
- ➔ Area of farmland in the 12 disaster affected municipalities where operations can be resumed.
 - Progress rate: 32.2% (March 2020)
- Promoting measures against radioactive materials necessary for the maintenance of forests as well as revitalizing the forest areas for logs and minor forest products.
- Resumption of coastal fishery, support for expanding market channels, securing and fostering human resources for fishery operators and management entities.

■ Fukushima Pride
<https://fukushima-pride.com/>



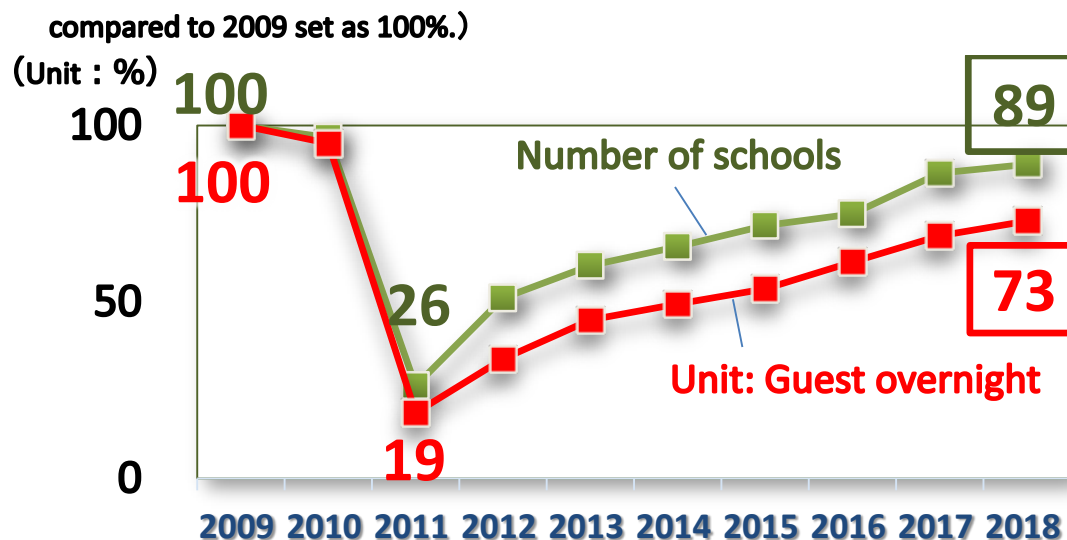
The number of tourists visiting Fukushima has recovered to 98.5% of pre-disaster levels, and the number of educational tours to 89%. However, the growth rate of inbound tourists has not yet reached the national average.

○ Tourists from outside Fukushima



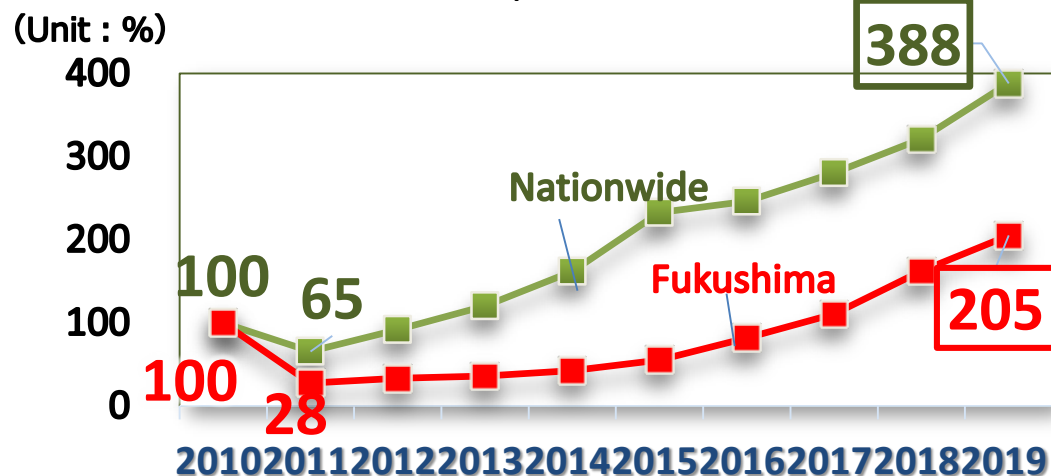
○ Educational Tour

(Ratios of Educational Tour compared to 2009 set as 100%)



○ Total number of international guests

(Ratios of International Guests compared to 2010 set as 100%)



Sake breweries tours in Fukushima which won the Annual Japan Sake Awards for 7 straight years

J-Village



Fully reopened in Apr. 2019



The Great East Japan Earthquake and Nuclear disaster Memorial Museum

Scheduled to open in summer 2020

Promotion of Hope Tourism especially in Hamadori (Coastal Region)

The route starts from Tokyo and travels around Fukushima, Tochigi, and Ibaraki.



Attracting inbound tourists by distributing attention-grabbing videos such as "SAMURAI spirits"



■ We have extended the "Kenminwari" hotel discount campaign exclusively for the people of Fukushima to 31 March 2021. It is to promote the use of inns and hotels in the Prefecture hit hard by COVID-19. Please take advantage of this campaign.

Revitalizing the tourism industry in the Prefecture with Fukushima's "Kenminwari" hotel discount campaign

No.1 Tadami River Bridge Viewpoint which attracts tourists from around Japan and the world (Mishima Town)



【Challenges and Responses】

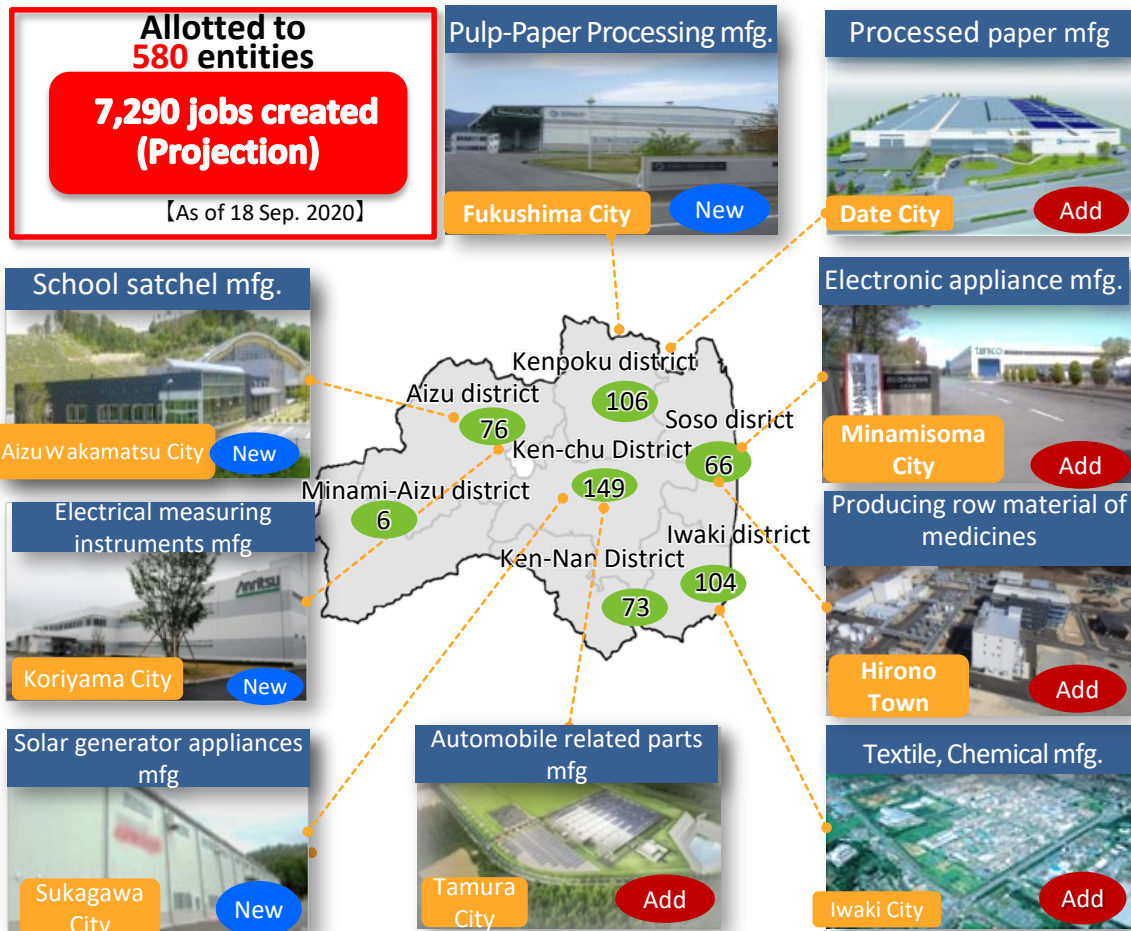
- Recovering the number of educational tours by expanding target regions while continuing to focus on students from neighbouring and metropolitan areas.
- Attracting more inbound tourists by promoting extensive sightseeing tours
- Promotion to attract inbound tourists by making use of facilities such as the Great East Japan Earthquake and Nuclear Disaster Memorial Museum, J-Village and the Fukushima Robot Test Field
- Creating content for tour programmes unique to Fukushima such as Hope Tourism.

(7) Industry ③ Business investment and employment creation

The shipment value of products in the Prefecture has recovered to exceed the benchmark set before the disaster (2010). The Prefecture's gross product growth rate has also exceeded that of Japan's GDP.

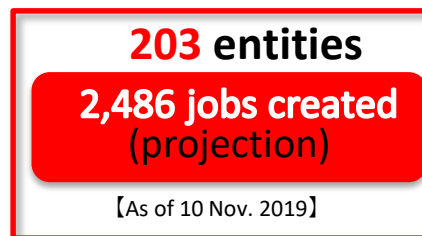
○ Fukushima business investment subsidy for revitalization of industries

Creating employment and industry expansion in the Prefecture through supporting companies looking to start new or expand the number of factories and other facilities in the Prefecture.



○ Subsidy to business investment for employment creation in the tsunami and nuclear disaster-affected areas

We support companies that set up new factory or additional factory inside the prefecture. Those activate business and create jobs.



○ Subsidy for investment promotion for the support of self-help and return and the employment creation

In order to secure jobs for disaster-affected people and accelerate support for their independence and ability to return to the areas they evacuated from, we will support companies that are planning to newly or additionally build plants in the evacuation-ordered areas, and make efforts to create employment and cluster industries.

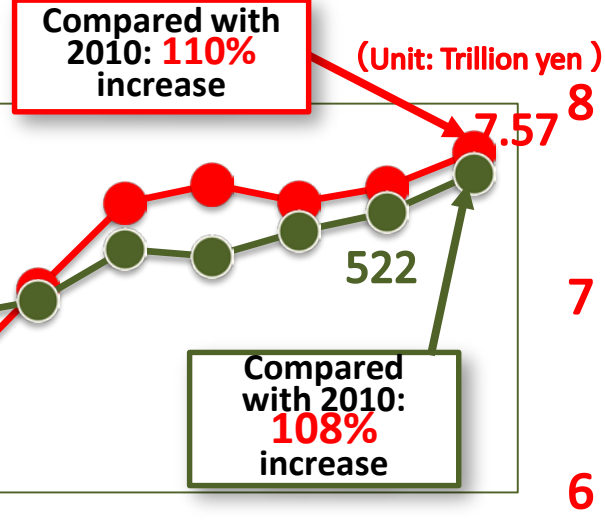


- ### [Challenges and Responses]
- Recovery of the industrial bases in Futaba County and the Coastal Region. Accelerating the Fukushima Innovation Coast Framework to develop self-sustaining and continuous industry growth
 - Creation of new industries through technological development support and attracting new businesses to the region. Promoting participation of local companies
 - Supporting disaster affected companies in Futaba County and other businesses to resume operations and promoting expansion of business from outside of the Prefecture.

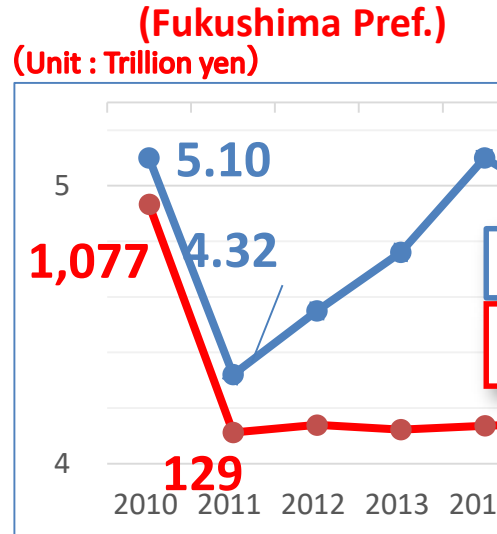
○ Real GDP

(Unit: Trillion yen)
550
500
450

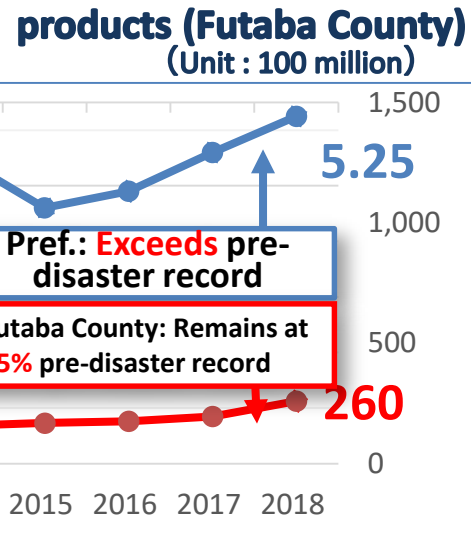
○ The Prefecture's gross product



○ The shipment value (Fukushima Pref.)



○ The shipment value of products (Futaba County)



(7) Industry ④ The Fukushima Innovation Coast Framework I

For the initiative to take shape, efforts are fully underway in the development of industry hubs, clustering of industries, fostering human resources, and expanding the non-resident population.




◆ There are 3 core pillars based on a blueprint drawn up on Dec. 9, 2019 for the development of industry with the Innovation Coast Framework.

- 1. A region where people can take on any challenge**
We aim to develop the coastal region to be a place where new challenges are taken up in various fields.
- 2. Local companies are major players**
In order to encourage not only cutting-edge companies but various local companies to actively participate in the initiative, we will promote wide-area cooperation between local businesses and incoming companies to the region.
- 3. Fostering human resources who will play a major role in the initiative**
We will foster innovators in the region and professionals who will support the industrial cluster.

◆ Hubs for research and main projects



Decommissioning Developing technology by gathering wisdom from Japan and around the world

- Demonstration tests necessary for decommissioning, etc. are carried out at Naraha Center for Remote Control Technology Development (Naraha Town)
- Okuma Analysis and Research Center (Okuma Town)
- Collaborative Laboratories for Advanced Decommissioning Science (CLADS) (Tomioka Town)



Agriculture, Forestry and Fisheries Industries Revitalization of agriculture, forestry and fisheries industries utilizing ICT and robotic technologies

- In a Japan first, initiatives are being implemented in areas of advanced agriculture, forestry and fisheries which are employed in the development and demonstration of ICT and robotic technologies.
- Adding higher value to marine products in Fukushima, developing processing technology, working on countermeasures against radioactive materials (Fukushima Prefectural Fisheries and Marine Science Research Centre, Iwaki City)

Robots and Drones Clustering of industries with the Fukushima Robot Test Field as the core

- R&D and demonstration tests of robots expected to be used in disaster response, distribution, infrastructure inspection and other purposes are performed at the Fukushima Robot Test Field (Minamisoma City and Namie Town)
- Experiment using drones to transport blood products for transfusions was performed by Tokyo Metropolitan Bokutoh Hospital.

Healthcare-related industries Opening up markets for businesses by supporting technological development

- Supporting the development of new medicine and diagnostic agents for diseases which focus on cancer (Translational Research Center, Fukushima City)
- Integrating support from the development through to the commercialization of medical devices (Fukushima Medical Device Development Support Centre, Koriyama City)




Energy, the Environment and Recycling Establishment of advanced renewable energy and recycling technologies

- Fukushima Hydrogen Energy Research Field (FH2R) (Namie Town) is the world's largest facility for producing hydrogen derived from renewable energy. Hydrogen produced at FH2R is used in fuel cells installed in Prefectural Azuma Sports Park and J-Village. Electricity is supplied to both of these facilities.

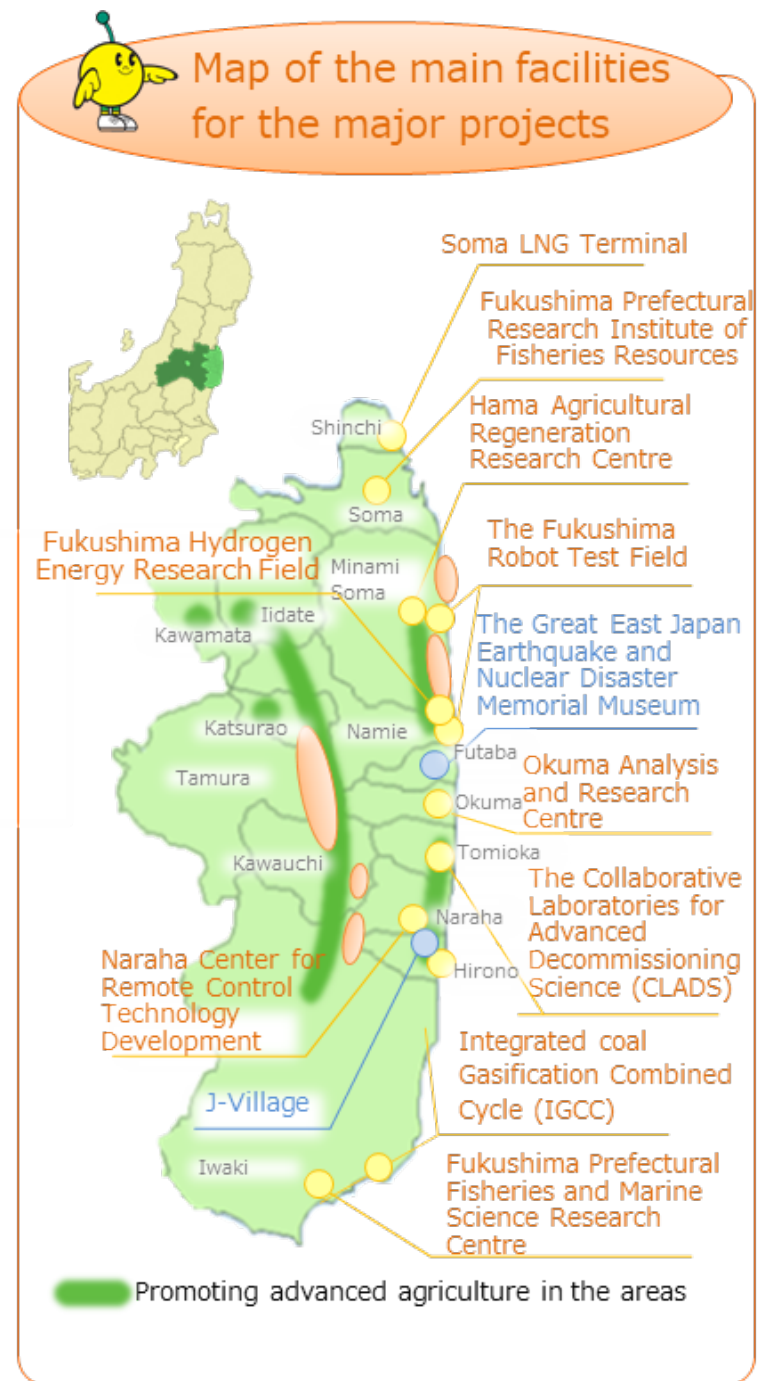




Aerospace industries Demonstrations of "flying cars" and attracting related companies

- Development of flying cars introduced at the Robot and Aerospace Festa Fukushima 2020 with the aim of expanding business of local companies (November 2020, at BIG PALETTE FUKUSHIMA, Koriyama City)





(7) Industry ④ The Fukushima Innovation Coast Framework II

◆Initiatives towards the realization of the framework

Clustering of industries

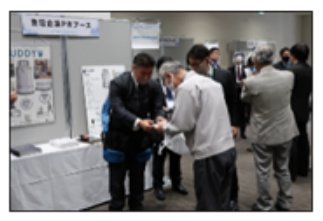
Creation of industrial complex and promoting business investment



■ Seminar on Industrial Sites for Business Establishment to publicize the most preferential system in Japan and environment of the location (Held in Tokyo, Nagoya, Osaka in the 2019 fiscal year)



■ Business exchange event aimed at matching newly established companies with local companies



Fostering human resources in education

Fostering the youth force who will carry the future of the Coastal Region

■ Revitalization Knowledge Project supports activities conducted by universities and technical colleges nationwide in the Prefecture for local residents.



■ Students at Soma Agricultural High School, which implements education programs under the Fukushima Innovation Coast Framenwork, are learning about smart agriculture in class.



Expanding the non-resident population

Expanding the non-resident population in the Coastal Region and other areas where the number of residents has decreased due to evacuation

■ Mieruka Visible Seminars have been held for residents for them be familiar with the efforts of the Fukushima Innovation Coast Framework.



■ Tours of the initiative's bases have been taking place for businesses.



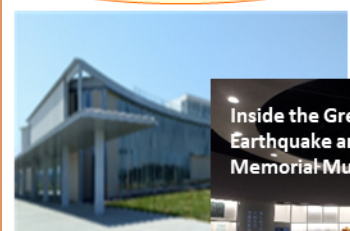
The number of factories and other facilities established in the Coastal Region and other areas

■ Utilising the business investment subsidies [As of Oct. 2020]
• 367 entities have set up new or additional factories
• 4,299 jobs created (projection)

- 【Examples of business investment agreements concluded】
- **Minamisoma City and ROBOTCOM & FA.COM Co., Ltd.**
 - Development and manufacture of robot packages (Scheduled to start operation in 2021)
 - **Naraha Town and Toyotsu Lithium Corporation**
 - Manufacture of on-board lithium-ion battery (Scheduled to start operation in 2021)
 - **Kawauchi Village and OHASHI KISAN Co., Ltd.**
 - Manufacture of components of construction machines (Scheduled to start operation in 2021)
 - **Tomioka Town and Katayama Manufacturing Co., Ltd**
 - Manufacture of cooling parts for semiconductors in electric vehicles (Scheduled to start operation in 2021)

Spreading information

Passing down the records and lessons learnt from the compound disaster to future generations



■ We collect and archive mainly nuclear disaster related materials and use them for displays and presentations, research and training. By disseminating information, we prevent memories of the disaster from fading and help with disaster reduction and prevention.

Re-establishment of the living environment

Creating an environment necessary for people to safely live
■ Development is progressing ■ Operation of a shuttle bus for public infrastructure
• Tohoku Chuo Expressway
• Joban Expressway
• JR Joban Line
• Fukushima Robot Test Field - Fukushima station



Topic

◆ Support office for business matching decommissioning-related industries in Fukushima

Established under the Fukushima Innovation Coast Promotion Organization [2020.7]



◆ Promoting the utilisation of drones in disaster response



From left, Mr. Yokota, Commissioner of the Fire and Disaster Management Agency, Mr. Suzuki, Vice Governor, and Mr. Saito, President of the Fukushima Innovation Coast Promotion Organization

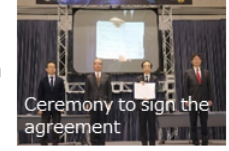
■ The Fire and Disaster Management Agency, the Fukushima Prefectural Government and the Fukushima Innovation Coast Promotion Organization have concluded an agreement on promoting the utilisation of drones.

Opening ceremony for the Great East Japan Earthquake and Nuclear Disaster Memorial Museum

■ Joint opening ceremony of the three facilities: the Great East Japan Earthquake and Nuclear Disaster Memorial Museum, Futaba Business Incubation and Community Center and the Fukushima 3.11 Memorial Park was held.



◆ Cooperation agreement for realising the "Sky Industrial Revolution"



■ The Fukushima Robot Test Field, the Oita Industrial Research Institute and the Wireless Networks Research Center of the NICT concluded a three-way agreement. They will collaborate by offering their knowledge and know-how to develop standards and testing methods necessary for the safe operation of drones and flying cars.

【Challenges and Responses】

- Creating an economic ripple effect in the Prefecture by connecting businesses to the innovation projects and enhancing industrial clustering.
- Developing the surrounding environment and communities along with establishing an international education research hub

(8) Efforts towards decommissioning

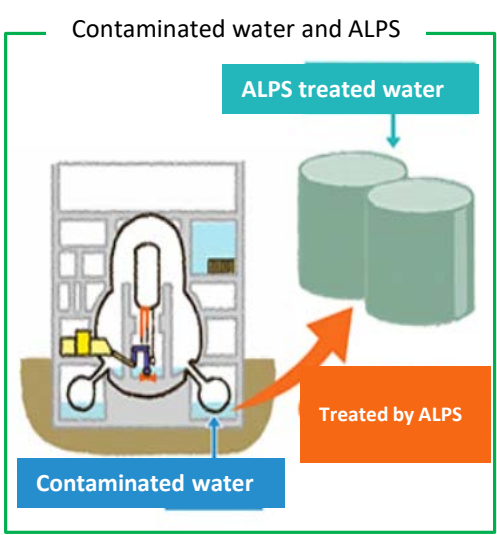
Fukushima Daiichi NPS

Measures being taken	Major milestones (on the Mid- to Long-Term Roadmap)	Current state of progress
Contaminated water measures	Reduction of the volume of contaminated water Reduce to 150m ³ /day (within 2020) Reduce to 100m ³ /day (within 2025)	Measures have been taken to prevent rainwater from seeping by repairing damaged portions of roofs of turbine and reactor buildings, paving the surface of the ground (facing) to reduce the volume of contaminated water.
Fuel removal from spent fuel pools	Complete fuel removal from Units 1 to 6 (within 2031)	Unit 1: Rubble is being removed from the upper part of the reactor building. Unit 2: Investigation of the pool did not find any damage to the fuel. Unit 3: Work is underway with the aim of completing fuel removal by the end of FY2020. Unit 4: Fuel removal was completed in 2014.
Fuel debris retrieval	Begin fuel debris retrieval from initial reactor (From Unit 2 (within 2021))	Unit 1: An additional investigation and analysis inside the primary containment vessel is being planned. Unit 2: A robot arm is currently being developed as a means to retrieve fuel debris. Unit 3: An additional investigation and analysis inside the primary containment vessel are being planned.
Waste measures	Develop technical outlook for treatment and disposal methods and their safety (around FY2021).	Construction of a solid waste incineration facility to dispose of waste such as fallen trees, rubble and used protective clothing is underway. A facility for analyzing low-to-medium-level radioactive waste such as rubble and incinerated ash is also being constructed.



Source by TEPCO

ALPS treated water



Contaminated water is being generated from the cooling of fuel which has melted (fuel debris) by the nuclear accident by the rainwater and groundwater flowing into the reactor buildings. ALPS treated water, in which most of the nuclides except tritium are removed using ALPS and other equipment, is being stored in tanks on the grounds of the Fukushima Daiichi NPS.



Source: Ministry of Economy, Trade and Industry

Information on decommissioning: "Learning about decommissioning"



Fukushima Daini NPS

Tokyo Electric Power Company Holdings, Inc. submitted a decommissioning plan to the Nuclear Regulation Authority (NRA) for approval in May 2020. It also submitted a request to Fukushima Prefecture and the towns where the power station is located for prior understanding about the decommissioning of Fukushima Daini.

- NRA has been reviewing the plan.
- The Association for Monitoring the Safety in Decommissioning has been confirming the content of the request.

【 Past developments 】

Sept. 2019 TEPCO submitted a notice of changes in the details of its power generation business to the Ministry of the Economy, Trade, and Industry in accordance with the Electric Utility Industry Law. With this, decommissioning of the Daini NPS has been determined.

Dec. 2019 The Fukushima Prefectural Government, Naraha Town and Tomioka Town where the power station is located, and TEPCO concluded the Agreement on Ensuring the Safety of the Surrounding Communities when Decommissioning the Fukushima Daini NPS.

【 Challenges and Responses 】

- It is necessary to have continuous surveillance carried out by the Association for Monitoring the Safety in Decommissioning to ensure the decommissioning progresses safely and steadily.

I Impact

Direct impact caused by the prevention of the spread of COVID-19

Suspension and postponement of various events, etc.

- ◆ Postponement of the Tokyo 2020 Olympic and Paralympic Games and Torch Relay
- ◆ Postponement of World Robot Summit and other events
- ◆ Cancellation of tours visiting disaster-affected areas, etc.

Suspension of construction work to build facilities and extension of the construction period

- ◆ Suspension of construction work caused by contractors suspending business
- ◆ Extension of the construction period caused by the delay of materials being delivered, etc.

Impact on the commerce and agriculture industry

- ◆ Large decrease in sales of business operators who reopened for business in the disaster-affected areas
- ◆ Large impact on business operators in keeping employees
- ◆ Demand remains low for flowers, etc.

Restriction on activities to support disaster-affected people

- ◆ Temporary closure of a base supporting the rebuilding of livelihoods outside the Prefecture
- ◆ Postponement of visits to disaster-affected people and disaster-affected companies, etc.

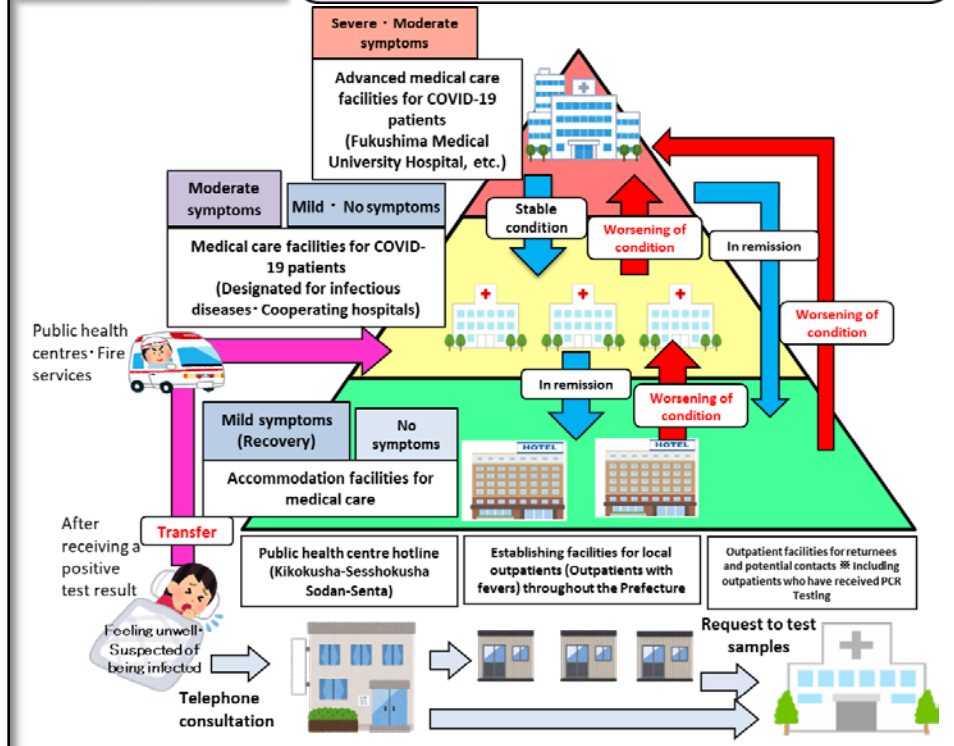
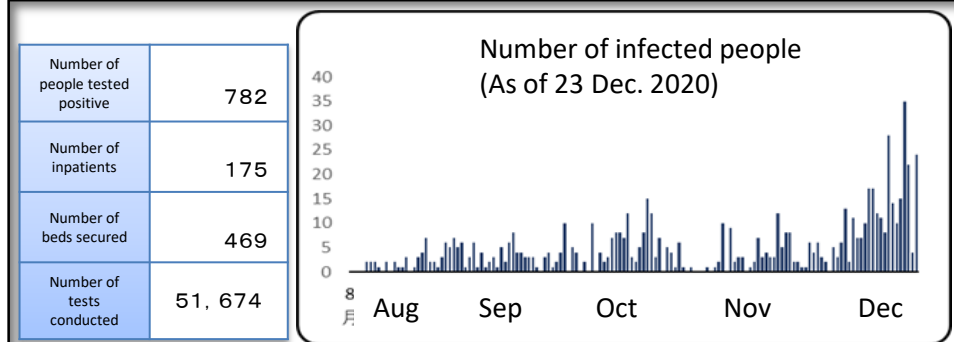
Three crises impacting revitalization and reconstruction which were caused by the matters mentioned above

People in the Prefecture who have been helping in the revitalization efforts after experiencing multiple disasters could be discouraged

People will not be able to understand the revitalization efforts due to the cancellations of events and ceremonies

People who are engaged in revitalization efforts and supporters, etc. will not be able to do activities with local people at actual places

II Medical treatment systems to treat COVID-19 (Fukushima model)



- Properly dividing the roles of medical facilities and accommodation facilities for medical care. Also, creating a system that allows patients who tested positive for COVID-19 to receive medical care depending on their symptoms (Taking measures to have even mild patients hospitalized). Fukushima Medical University Hospital is treating severe patients or patients with worsening conditions
- Securing **PCR test capacity of 2204 cases per day** in order not to have patients wait to take the test.
- **Establishment of local outpatient facilities (Outpatient treatment for patients with fever). Providing medical treatment for patients with fevers and reducing the burden of outpatient facilities for returnees and potential contacts.**
- **The Prefectural medical management headquarters manages the transferring of patients over a wide-area and patients who have a risk of worsening conditions. The Headquarters also supply and deliver medical goods needed for medical treatment**
- **Requesting the cooperation of fire services and concluding a comprehensive agreement with all the public health centres and fire services in the Prefecture. Securing a stable and wide-area transfer system**
- Making use of the "Kibitan Healthcare Network", a medical information network which connects related medical care facilities with accommodation facilities for patients. **Quickly sharing medical information** such as diagnostic **imaging results from CT and MRI scans.**
- Being the first in the country to support medical facilities treating COVID-19 patients by compensating for unused hospital beds

III Economic measures

- **In addition to the central government measures, the Prefecture is implementing its own initiatives in order to advance both the enhancement of medical treatment systems and the recovery of the prefectural economy in stages.**
 - Securing beds for inpatients
 - Providing financial payments to business operators who cooperated with the request to shutdown business for infection prevention measures
 - Providing financing support for small and medium sized companies
 - Creation of employment opportunities through the prefectural government's commissioned projects
 - Promoting equipment installations to enhance the supply chains of small and medium sized companies
 - Supporting local public transportation companies trying to maintain operations
 - Supporting farmers whose income have fallen to enroll in income insurance. ,etc.

Implementing efforts in revitalization and reconstruction simultaneously with infection prevention measures and recovery of the economy

(9) Damage caused by Typhoon Hagibis and its' enormous impact on revitalization

Damage caused by Typhoon Hagibis (As of Jul. 14, 2020)

- Deaths: 38 (including 6 disaster-related deaths)
- Evacuees: 4,690
- Housing damage: Totally destroyed 1,470 houses, Partially destroyed 12,311 houses.
- Public infrastructure facilities disaster assessment: approx. JPY 89 billion
- Damage to agriculture, forestry and fisheries industries: approx. JPY 63.6 billion
- Damage to commerce and Industry: JPY 93 billion
- Damage to the Prefecture's cultural properties: approx. JPY 0.5 million
- Damage to Social and educational facilities: approx. JPY 2 billion

Fukushima Pref. Govt. initial budget in FY2020 for Typhoon Hagibis: JPY 58.8 billion

- 【Details】
- Restoration and Maintenance Subsidy Project for Facilities of Small and Medium Enterprise Groups: JPY 9.1 billion
 - Public infrastructure (Agriculture, Forestry and Fishery Department, Public Works Department): JPY 42.7 billion
 - Business continuity support project: JPY 0.5 billion

Route 288 (Mougi district, Miharu Town)



【Disaster-affected residents】
Counselling for everyday life, checking in with members of the community as part of isolation prevention

【Disaster-affected companies】
Subsidies for supporting enterprise groups, sustaining small businesses, etc. to support resumption of business and disaster prevention.

【 Supporting aid 】

Affected farmland (Hosoya district, Miwa-machi, Iwaki City)



【Agricultural, forestry and fisheries workers】
Supporting the restoration of agricultural machinery and the resumption of farming

【Tourism companies】
Attracting tourists through "fukko-wari" reconstruction discounts.

Abukuma Express line (Tomino Station - Kabuto Station)



- 【Challenges and Responses】
- Early restoration of damaged sites such as roads, rivers and farmland
 - Continue to carefully support affected people who are engaged in commerce and industry
 - Developing disaster-resistant communities which can withstand intense and frequently occurring disasters by promoting disaster prevention measures, disaster mitigation, and building national land resilience

While firmly handling the impact of COVID-19 and other problems, the Prefecture is continuing to proceed with revitalization and move forward to the next phase.

New Basic Policy for revitalization

【Organisation】

- Amendment of the Act for Establishment of the Reconstruction Agency (enacted on 5 June 2020)
 - Extending the period of establishment for the Reconstruction Agency by 10 years (until 31 March 2031)
 - Establishing the Minister for Reconstruction post and maintaining comprehensive coordination functions, etc.

【System】

- Amendment of the Act on Special Measures for the Reconstruction and Revitalization of Fukushima (enacted on 5 June 2020)
 1. Promoting reconstruction and revitalization in areas where evacuation orders have been lifted
 2. Developing the clustering of industries which centers around the promotion of the Fukushima Innovation Coast Framework
 3. Dealing with harmful rumors
 4. Reviewing of the planning system

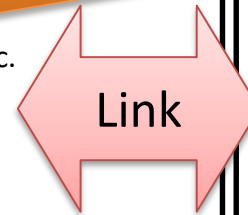
【Financial resources】

- Revitalization efforts after FY2021 (secured on 17 July 2020)
 - Project scale and financial resources have been determined in the Second Reconstruction and Revitalization Period (Approx. 1.6 trillion yen for reconstruction and revitalization projects. Approx. 1.1 trillion yen allocated to Fukushima Prefecture)

- Due to the cancellations of events for revitalization and traditional events, there is an impact towards the fading of memories and towards communities of disaster-affected residents.
- With the demand remaining low for the Prefecture's agricultural products and a decrease in sales of restaurants, the commerce and agriculture industry operators are impacted.
- Due to unemployment and other problems, rebuilding the livelihoods of disaster-affected residents is impacted.

Impact of COVID-19

Proceeding with the revitalization through the central government support.



Revitalization from the Great East Japan Earthquake and the nuclear disaster

- **Reconstruction and revitalization in evacuation area**
 - Re-establishment of the living environment including: healthcare, education, commerce, and public infrastructure etc.
 - Restoring commerce, industry, and occupations and livelihoods
 - Expanding the non-resident population and promoting relocation from outside of the Prefecture etc.
- **Continuous efforts for revitalization**
 - Support for rebuilding livelihoods, mental healthcare for disaster affected residents, recovery of the environment, etc.
- **Prevention of harmful rumours and memories related to the disaster from fading away**
 - Educational tours attracting inbound tourists
 - Expanding sales channels of the Prefecture's agricultural, forestry, and fisheries products etc.
 - Hosting the baseball and softball games for the Tokyo 2020 Olympic and Paralympic Games, etc.
- **Projects for the future**
 - Industrial clustering based on the Fukushima Innovation Coast Framework
 - Fostering human resources for new industries etc.
 - Creating a base for international education research, etc.



- **Enhancing medical treatment systems to secure residents' physical and mental health.**
 - **Rebuilding the livelihoods of residents affected by the disaster.**
 - **Stimulating demand in tourism.**
 - **Supporting small and medium sized companies**
 - **Supporting agricultural, forestry and fisheries workers, etc.**
- Immediate and steady support to answer the needs of disaster-affected residents and companies.

Measures against COVID-19 and towards revitalization

Together with the revitalization and the reconstruction of the region, the Prefecture is moving forward to the next phase

Published by the Fukushima Prefectural Government
Address: 2-16 Sugitsuma-cho, Fukushima City, Japan
Telephone: (+81) 24- 521-7109
E-mail fukkoukeikaku@pref.fukushima.lg.jp



Fukushima Revitalization Station
Portal site of revitalization progress

<http://www.pref.fukushima.lg.jp/site/portal-english/>



Steps for Revitalization in Fukushima the latest version is available on <http://www.pref.fukushima.lg.jp/site/portal/ayumik-1.html>

* Please feel free to contact us if you have any questions about this publication.