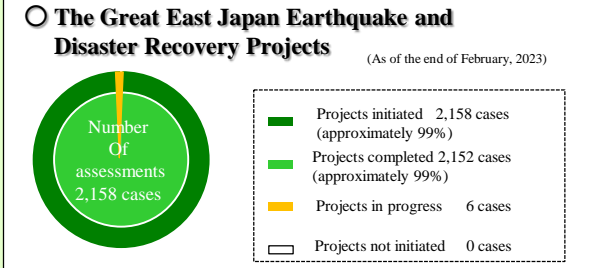


Toward the realization of a "New Fukushima" - Tracing the path of recovery - (1/2)

★ ... Related to the Fukushima Innovation Coast Framework

2023.3.27

[Living] Realization of a local community where people can live safely and securely



Public infrastructure

Joban expressway 2015.3 (Entire line in service) Iwaki Chuo IC to Hirano IC (Completion of expansion to 4-lane) (2021.6.15)	Onahama Port 2022.6 (Commencement of full scale operation) International bulk terminal	Fukushima Reconstruction Roads 2020s (Scheduled completion) Yagisawa tunnel opening ceremony (2018.3.18)	Completion of the restoration of 10 fishing ports in the prefecture ● Shinci Town : Tsurushima Fishing Port ● Soma City : Matsukawara fishing port ● Minamisoma City : Manogawa fishing port ● Namie Town : Ukedo Fishing Port ● Tomioka Town : Tomioka fishing port ● Iwaki City : Hisanohama fishing port, Toyoma fishing port, Nakoso, Yotsukura fishing port, Kobama fishing port ◀Reference▶ Ukedo fishing port (completion ceremony on November 20, 2021)
Joban Line 2020.3 (Full scale resumption of service) Source: East Japan Railway Company, Mito Branch	Tohoku Chuo Expressway (Soma-Fukushima Road) 2021.4 (Entire section was opened) Opening ceremony between Ryoza IC and Date-Koori IC (2021.4.24)	Tadami Line 2022.10 (Full scale resumption of service) Resumption of service from Aizu Kawaguchi Station to Tadami Station	

Commercial facilities

Shopping centre "YO-TASHI" 2016.3 (Opened) Kawauchi Village	Yamakia district's reconstruction hub and commercial facility "Tonya no Sato" 2017.7 (Opened) Kawamata Town	Odaka Store 2018.12 (Opened) Minamisoma City	Michi-no-Eki Namie 2021.3 (Grand opening) Namie Town
Tomioka Town commercial complex "Sakura Mall Tomioka" 2016.11 (Opened) Tomioka Town	Roadside Station of Iitate Village Madeikan 2017.8 (Opened) Iitate Village	Kokonara shopping mall 2018.6 (Opened) Naraha Town	Commercial facility "Okumart" 2021.4 (Opened) Okuma Town

Healthcare-related facilities

1 Futaba Medical Center-affiliated Futaba Revitalization Clinic
2016.2 (Commencement of medical services)
Naraha Town

2 Futaba Medical Center-affiliated Hospital
2018.4 (Commencement of medical services)
Tomioka Town

Educational facilities

Resumption of local schools
[Resumption dates]

- Odaka District, Minamisoma City: Kindergartens, elementary schools and junior high schools (2017.4)
- Naraha Town: Childcare centre, elementary schools and junior high schools (2017.4)
- Yamakia District, Kawamata Town: Elementary schools and junior high schools (2018.4)
- Tomioka Town: Elementary schools and junior high schools (2018.4)
- Childcare centres (2019.4)
- Katsurao Village: Kindergartens, elementary schools and junior high schools (2018.4)
- Iitate Village: Childcare centres, elementary schools and junior high schools (2018.4)
- Hirono Town: Childcare centres (2019.4)

Residential facilities

Constructing Revitalization Public Housing

- For those affected by the earthquake and tsunami: Completed 2,807 units in 11 municipalities
- For evacuees from the nuclear power accident: Completed 4,767 units by Prefectural Government
- For returnees and others: Planned development of 795 units in 10 municipalities

Reference: Iwasaki Housing Complex, Iwaki City

Wide area bus services

[Start date of service of each route]

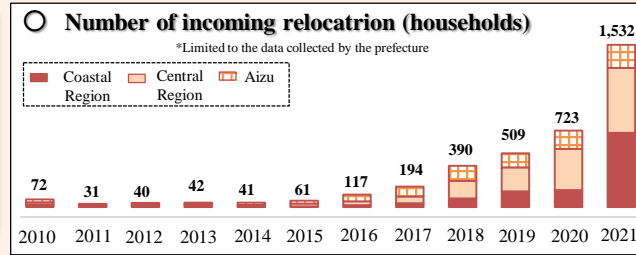
- Iwaki to Tomioka Line (2017.4.1)
- Katsurao to Funehiki Line (2017.4.1)
- Kawauchi to Funehiki Line (2017.4.1)
- Kawauchi to Ono Line (2017.10.2)
- Minamisoma, Kawamata to Fukushima via Fukushima Medical University Line (2017.10.1)
- Kawauchi to Tomioka Line (2018.4.2)
- Tomioka to Namie FH2R Line (2021.4.1)

Source: Shin-Johari Kotsu Co., Ltd.

Recovery of the environment

Environmental Radiation Monitoring Centre 2015.11 (Operation commenced) Minamisoma City	Centre for Environmental Creation 2016.7 (Commenced full operation) Miharu Town	Interim Storage Facility 2015.3 (Start of transfer) Okuma Town, Futaba Town	Whole area decontamination 2018.3 (Completion) For Difficult-to-Return Zones, decontamination is in progress in Special Zones for Reconstruction and Revitalization.
--	--	--	---

[People] Fostering human resources leading the future and building community ties

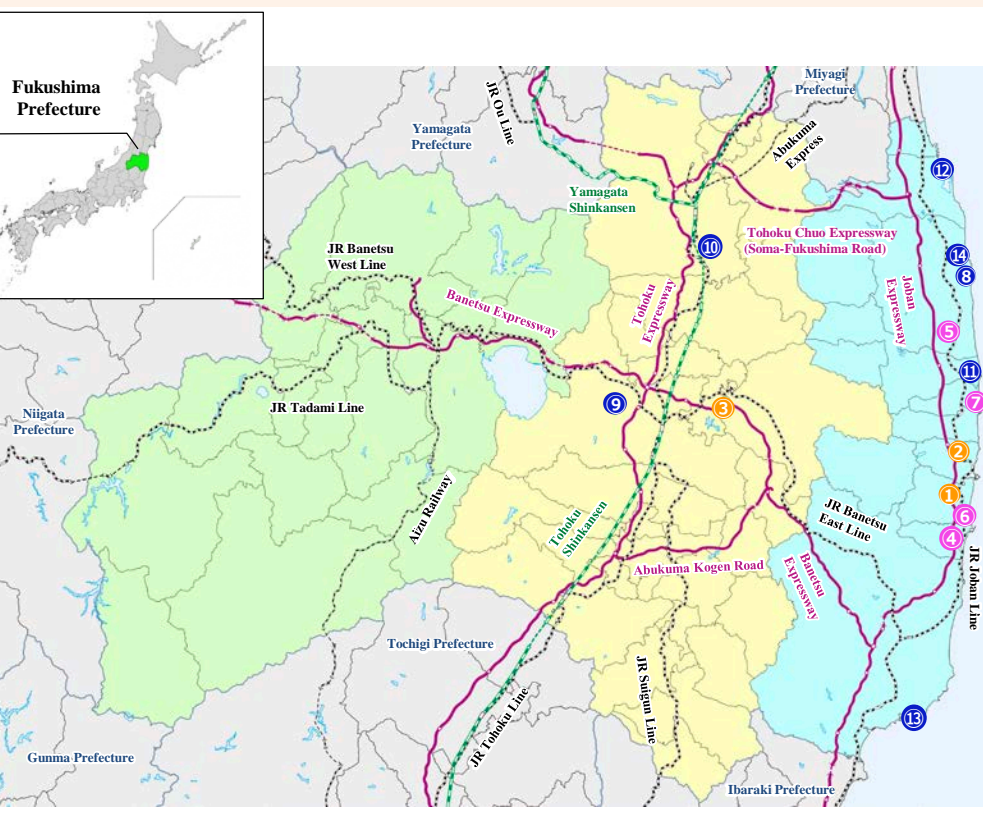


Education and fostering human resources

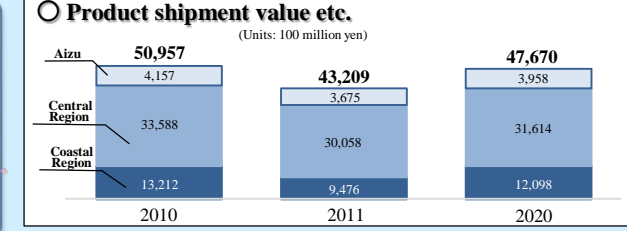
4 Futaba Future School (Senior & Junior High School) 2015.4 (High school opening) Hirono Town	5 Odaka Industrial Technology and Commerce High School 2017.4 (Opened) Minamisoma City	Faculty of Food and Agricultural Sciences at Fukushima University 2019.4 (Establishment) Fukushima City	School of Health Sciences at Fukushima Medical University 2021.4 (Establishment) Fukushima City
--	---	--	--

Creation of relocation, settlement and increasing the number of related/non-resident population

Katsurao Village Community Revitalization Centre "Azalea" 2018.6 (Opened) Katsurao Village	6 J Village 2019.4 (Full reopen) Naraha Town, Hirono Town	ICT Office "Smart City AiCT" 2019.4 (Opened) Aizuwakamatsu City	7 The Great East Japan Earthquake and Nuclear Disaster Memorial Museum 2020.9 (Opened) Futaba Town
Futaba Business Incubation and Community Center 2020.10 (Opened) Futaba Town	The Historical Archive Museum of Tomioka 2021.7 (Opened) Tomioka Town	Fukushima 12 Municipalities Relocation Support Center 2021.7 (Opened) Tomioka Town	Preserved Disaster Remains: Namie Municipal Ukedo Elementary School 2021.10 (Opened) Namie Town



[Employment] Creating sustainable and attractive jobs



Decommissioning

Naraha Center for Remote Control Technology Development 2016.4 (Commencement of full-scale operation) Naraha Town	Collaborative Laboratories for Advanced Decommissioning Science (CLADS) 2017.4 (Commencement of operation) Tomioka Town	Okuma Analysis and Research Centre 2018.3 (Commencement of partial operation) Okuma Town	Creative decommissioning robot competition (Hairo Sozo Robocon) 2016~ (Seeds from the 6th Competition (2021)) Fukushima City
--	--	---	---

Robotics, Drones, Aerospace

University of Aizu Revitalization Center 2015.10 (Commencement of operation) Aizuwakamatsu City	8 Fukushima Robot Test Field 2020.3 (Fully opened) Minamisoma City, Namie Town
--	---

Healthcare-related industries

9 Fukushima Medical Device Development Support Center 2016.11 (Commencement of operation) Koriyama City	10 Fukushima Global Medical Science Centre 2016.12 (Commencement of full operation) Fukushima City
--	---

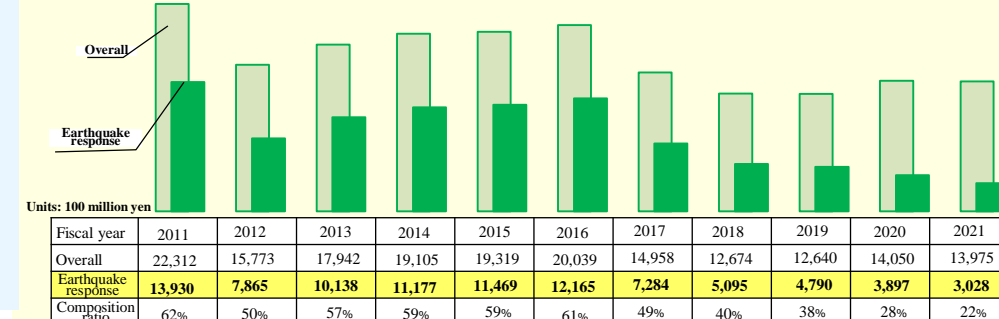
Energy, Environment, Recycling

Fukushima Renewable Energy Institute, AIST (FREIA) 2014.4 (Commencement of operation) Koriyama City	11 Fukushima Hydrogen Energy Research Field 2020.3 (Opening) Namie Town	Soso Smart Eco-Company 2020.10 (Operation commenced) Okuma Town	Wood Biomass Power Generation 2013~ (Operational) Aizuwakamatsu City
--	--	--	---

Agricultural, forestry, and fisheries industries

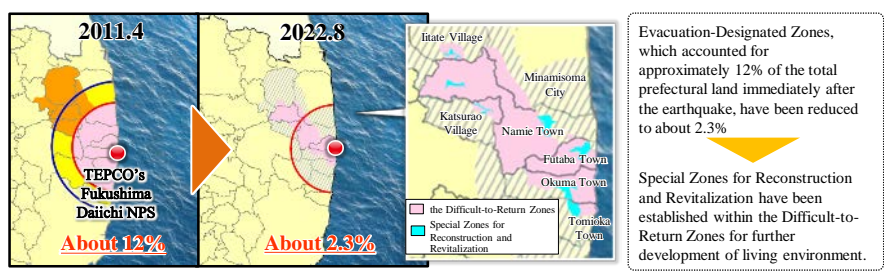
Dairy Farm FELIZ LATTE 2015.9 Fukushima City	14 Hama Agricultural Regeneration Research Centre 2016.3 (Opened) Minamisoma City	15 Fukushima Prefectural Research Institute of Fisheries Resources 2019.2 (Commencement of full operation) Soma City	16 Fisheries and Marine Science Research Centre 2019.7 (Commencement of operation) Iwaki City
Fukushima Advanced Manufacturing Centre For Laminated Timber (FLAM) FY2022 (Commencement of operation) Namie Town	Forestry Academy Fukushima 2022.4 (Opened) Koriyama City	Kawamata Polyester Soil Cultivation Promotion Association Anthurium Kawamata Town	Nexus Farm Okuma Corp. Okuma Town

Trend of expenditure for earthquake and nuclear disaster response projects (prefectural)



Toward the realization of a "New Fukushima" - Tracing the path of recovery(2/2)

Steady reconstruction and revitalization of evacuation zones




Shinchi Town

- Dec. 2016 ● Completion of Shinchi Station building [Photo]
- Nov. 2018 ● Completion of Shinchi Energy Centre
- Jun. 2019 ● Reopening of Tsurushihama Swimming Beach




Soma City

- Apr. 2015 ● Opening of the Soma City Memorial Hall for Commemoration and Remembrance
- Apr. 2017 ● Matsukawaura Bridge placed in service, resumption of illumination
- Feb. 2018 ● Resumption of nori seaweed harvest and shipment (first time since the disaster) [Photo]
- Mar. 2018 ● Commencement of operations at Soma LNG Terminal and other facilities
- Oct. 2020 ● Grand opening of Matsukawaura Seaside Station



Minamisoma City


- Apr. 2014 ● Odaka Municipal Hospital resumes outpatient services three days a week
- Jul. 2016 ● [Evacuation orders lifted, excluding Difficult-to-Return Zones]
- Apr. 2017 ● Reopening of Odaka Dispensary
- Apr. 2017 ● Opening of Odaka Industrial Technology and Commerce High School [Photo]
- Mar. 2018 ● Opening of Yagisawa Tunnel of Prefectural Road No. 12 Haramachi—Kawamata Line
- Apr. 2018 ● Resumption of Umenoka, an intensive care home for the elderly
- Dec. 2018 ● Reopening of Yosshi-i Land, a long-term care health facility
- Dec. 2018 ● Opening of public-funded commercial facility "Odaka Store"
- Jan. 2019 ● Opening of Odaka district revitalization hub facility "Odaka Exchange Center"
- Mar. 2020 ● Full-scale opening of Fukushima Robot Test Field
- Apr. 2020 ● Opening of Odaka Certified childcare centre (Odaka District, etc.)



Residential rate 61.0%

Namie Town


- Mar. 2017 ● [Evacuation order lifted excluding Difficult-to-Return Zones]
- Mar. 2017 ● Opening of Namie Clinic within the town
- Apr. 2017 ● Reopening of Namie Station on JR Joban Line
- Dec. 2017 ● [Certification of the Plan for Special Zone for Reconstruction and Revitalization of Namie Town]
- Apr. 2018 ● Opening of elementary, junior high schools and certified childcare centres
- Mar. 2020 ● Opening of Fukushima Hydrogen Energy Research Field
- Mar. 2021 ● Grand opening of Futaba Station (Roadside Station) [Photo]
- Aug. 2021 ● Grand opening of public accommodation facility "Ikoino-mura Namie"
- Oct. 2021 ● Opening of Disaster Remains: Namie Municipal Ukedo Elementary School
- Jun. 2022 ● Opening of complex facility "Fureai Center Namie"



Residential rate 12.6%

Futaba Town


- Sept. 2017 ● [Certification of the Plan for Special Zone for Reconstruction and Revitalization of Futaba Town]
- Sept. 2019 ● Experimental cultivation of spinach and other vegetables began in Morotake District
- Mar. 2020 ● [Evacuation orders lifted, excluding Difficult-to-Return Zones]
- Mar. 2020 ● Reopening of Futaba Station on JR Joban Line
- Sept. 2020 ● Opening of The Great East Japan Earthquake and Nuclear Disaster Memorial Museum
- Oct. 2020 ● Opening of Futaba Business Incubation and Community Center
- Aug. 2022 ● [Evacuation orders lifted in Special Zones for Reconstruction and Revitalization]
- Feb. 2023 ● Opening of Futaba Town clinic [Photo]



Residential rate About 1.1%

Okuma Town


- Nov. 2017 ● [Certification of the Plan for Special Zone for Reconstruction and Revitalization of Okuma Town]
- Apr. 2019 ● [Evacuation orders lifted excluding Difficult-to-Return Zones]
- Apr. 2019 ● Completion of New Town Hall in Ogawara District [Photo]
- Aug. 2019 ● First shipment from Nexus Farm Okuma strawberry farm
- Mar. 2020 ● Reopening of Ono Station on JR Joban Line
- Apr. 2020 ● Opening of group home for the elderly "Okuma Mominoki-en"
- Feb. 2021 ● Opening of Okuma Town clinic
- Apr. 2021 ● Opening of commercial facility "Okumart"
- Oct. 2021 ● Opening of accommodation facility with hot spring "Hot Okuma" and a community facility "Linkru Okuma"
- Jun. 2022 ● [Evacuation orders lifted in Special Zones for Reconstruction and Revitalization]
- Jul. 2022 ● Opening of Okuma Incubation Center for start-ups



Residential rate 4.2%

Tomioka Town

- Mar. 2017 ● Grand Opening of "Sakura Mall Tomioka"
- Apr. 2017 ● [Evacuation orders lifted, excluding Difficult-to-Return Zones]
- Oct. 2017 ● Reopening of Tomioka Station on JR Joban Line
- Mar. 2018 ● [Certification of the Plan for Special Zone for Reconstruction and Revitalization of Tomioka Town]
- Apr. 2018 ● Opening of Futaba Medical Center-affiliated Hospital [Photo]
- Apr. 2018 ● Resumption of elementary and junior high schools within the town
- Mar. 2020 ● Reopening of Yonomori Station on JR Joban Line
- Jul. 2021 ● Opening of Fukushima 12 Municipalities Relocation Support Center
- Jan. 2022 ● [Eased entry restrictions in the Special Zones for Reconstruction and Revitalization]
- Mar. 2022 ● Opening of Sakuranosono, an intensive care home for the elderly
- Apr. 2022 ● [Commencement of preparatory accommodations for the lifting of evacuation orders]




Residential rate 17.8%

Development status of living environment in 15 municipalities (Residential rate as of January 2023)

Medical ... ● Education... ● Welfare... ● Commerce ... ● Other... ●

Iitate Village


- Aug. 2016 ● Opening of Fureai-kan community centre
- Sept. 2016 ● Resumption of medical services at Iitate Clinic
- Mar. 2017 ● [Evacuation orders lifted except for the Difficult-to-Return Zones]
- Aug. 2017 ● Opening of the Iitate Village Michi-no-Eki Madeikan(Roadside Station) [Photo]
- Apr. 2018 ● [Certification of the Plans for Special Zone for Reconstruction and Revitalization of Iitate Village]
- Apr. 2018 ● Reopening of elementary, junior high school and certified childcare centre within the village
- Sept. 2018 ● Resumption of community bus service
- Apr. 2020 ● Opening of a 9-year compulsory education school "Iitate Kibo-no-Sato Gakuen"



Residential rate 31.3%

Kawamata Town


- Jun. 2015 ● Opening of Kotsunagi Bypass of National Road Route 114
- Oct. 2016 ● Resumption of medical service at Yamakiya Clinic
- Mar. 2017 ● [Evacuation orders completely lifted]
- Jul. 2017 ● Opening of a reconstruction hub and commercial facility "Tonya-no Sato" [Photo]
- Apr. 2018 ● Reopening of elementary and junior high schools in the Yamakiya district
- Sept. 2019 ● Agreement of new industrial base development between Mitsufuji and Ritsumeikan University
- Mar. 2022 ● Completion of Sekiba Tunnel of National Road Route 115 (Yamakiya District)



Residential rate 49.3%

Katsurao Village


- Jun. 2016 ● [Evacuation order lifted excluding areas with Difficult-to-Return Zones]
- Nov. 2017 ● Resumption of medical services at Katsurao Village Clinic
- Apr. 2017 ● Reopening of Maruichi Store
- Jul. 2017 ● Reopening of Ishii Shokudo restaurant, Yamazaki Y Shop Yamasa [Photo]
- Apr. 2018 ● Resumption of kindergartens, elementary and junior high schools within the village
- May 2018 ● [Certification of the Plans for Special Zones for Reconstruction and Revitalization of Katsurao Village]
- Jun. 2018 ● Opening of Katsurao Village Community Revitalization Centre "Azalea"
- Jun. 2022 ● [Evacuation order lifted in Special Zones for Reconstruction and Revitalization]



Residential rate 35.6%

Tamura City


- Jul. 2011 ● Resumption of medical service at Miyakoji Dental Clinic
- Mar. 2012 ● Reopening of Miyakoji Madoka-So, an intensive care home for the elderly
- Apr. 2014 ● [Evacuation order completely lifted]
- Apr. 2014 ● Reopening of elementary and junior high schools within Miyakoji Machi
- Apr. 2014 ● Opening of a publicly-funded commercial facility "Domo"
- Mar. 2016 ● Opening of confectionery "Miyakoji Sweets Yui" [Photo]
- Apr. 2017 ● Opening of Miyakoji Elementary School
- Jul. 2019 ● Opening of Tamura Municipal Hospital



(Miyakoji District) Residential rate 85.7%

Kawauchi Village

- Apr. 2012 ● Reopening of the municipal health, welfare and medical facility "Yufune"
- Apr. 2012 ● Reopening of elementary and junior high schools, nurseries within the village
- Oct. 2014 ● [Evacuation order lifted for Evacuation Order Cancellation Preparation Zones]
- Nov. 2015 ● Opening of Intensive Care Home for the Elderly Kawauchi
- Mar. 2016 ● Opening of commercial facility "Shopping Centre YO-TASHI"
- Apr. 2016 ● Opening of "Moritaro Pool" [Photo]
- Jun. 2016 ● [Evacuation orders completely lifted]
- Apr. 2021 ● Opening of an integrated elementary and junior high school
- Apr. 2021 ● Opening of a certified daycare centre



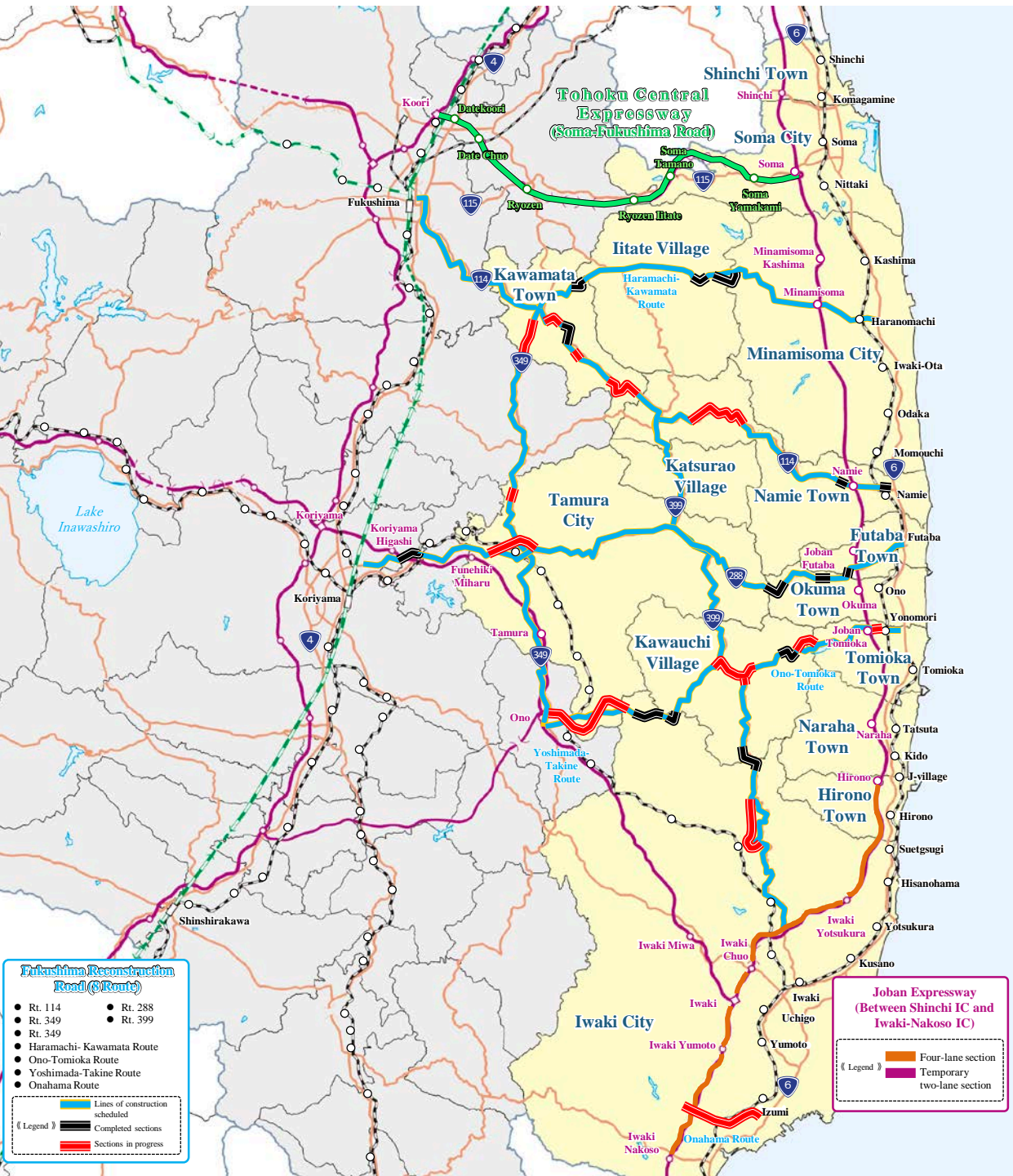
Residential rate 83.1%

Iwaki City

- Apr. 2017 ● Opening of Iwaki Green Base [Photo]
- Jul. 2017 ● Opening of Iwaki FC Park
- Jun. 2018 ● Grand opening of AEON Mall Iwaki Onahama
- Dec. 2018 ● Establishment of Iwaki Medical Center
- Sept. 2019 ● Training camp for Samoa national team for Rugby World Cup
- Apr. 2022 ● Operation of the largest domestic Wood Biomass Power Generation
- Nov. 2022 ● Iwaki FC won J3 championship and promoted to J2




Residential rate 90.3%



Hirono Town

- Aug. 2011 ● Reopening of Baba Clinic
- Jan. 2012 ● Reopening of Hirono Pharmacy
- Mar. 2012 ● [Return of Town Hall, lifting of mayor's evacuation orders] (Emergency Evacuation Preparation Zone (national designation) lifted on September 30, 2011)
- Apr. 2012 ● Reopening of Hanabusaen, an intensive care home for the elderly
- Aug. 2012 ● Reopening of elementary and junior high schools within the town
- Apr. 2015 ● Opening of Futaba Future High School
- Mar. 2016 ● Grand opening of a commercial facility, "Hirono Terrasse" [Photo]
- Apr. 2019 ● Opening of Futaba Future Junior High School
- Apr. 2019 ● Opening of a certified childcare centre
- Apr. 2019 ● Grand opening of J-Village



Residential rate 90.3%

Naraha Town

- Jun. 2014 ● Reopening of Tatsuta Station on JR Joban Line
- Sept. 2015 ● [Evacuation orders completely lifted]
- Feb. 2016 ● Establishment of Futaba Medical Center-affiliated Futaba Revitalization Clinic
- Mar. 2016 ● Reopening of Lily Garden, an intensive care home for the elderly
- Apr. 2017 ● Reopening of elementary, junior high schools and certified childcare centres within the town
- Jun. 2018 ● Grand opening of "Kokonara Shopping Mall" and "Naraha CANvas"
- Jul. 2018 ● Partial reopening of J-Village
- Apr. 2019 ● Opening of an indoor sports facility, "Naraha Sky Arena"
- Apr. 2019 ● Grand opening of J-Village
- Apr. 2019 ● Reopening of a hot spring and health facility at Michi-no-Eki Naraha (Roadside Station)
- Jun. 2020 ● Reopening of Michi-no-Eki Naraha Product Promotion Centre
- Jun. 2022 ● Opening of "CODOU", a support centre for relocation and living

Residential rate 64.9%